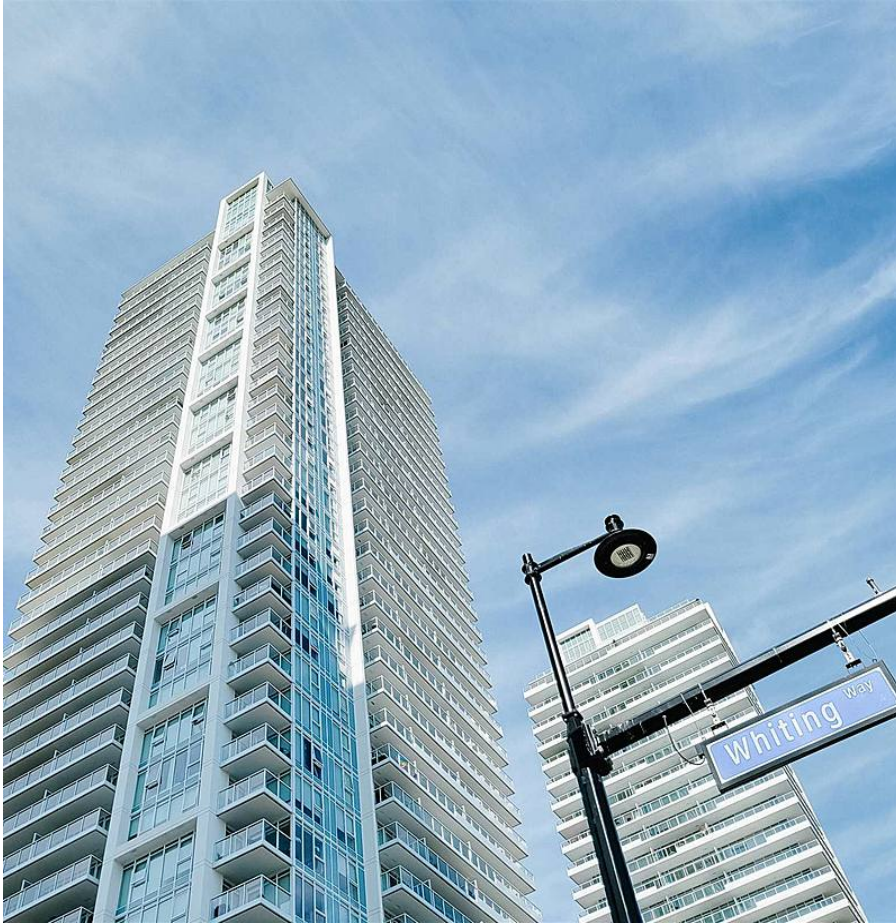


# 2903 652 Whiting Way, Coquitlam

\$1,689,900



A rare opportunity to own a stunning new Penthouse at Marquee by Bluesky Properties! Located in the masterplanned community of Lougheed Heights in Coquitlam, you will enjoy the views from 1664 sf interior space & 1202 sf of terrace & balcony. Open floor plan, includes a premium Bosch full-size appliance package & A/C. Enjoy 17,000 sf of resort-inspired amenities including: heated outdoor pool, outdoor dining terrace with BBQs, fireside lounge, indoor entertainment lounge, fitness centre & concierge. Within walking distance to the Millennium & Evergreen Skytrain lines, along with hundreds of shops & services. Two prkg (P2 #134 & #135) & SL included. Measurements are approximate & should be confirmed by the buyer.

## KEY INFORMATION

MLS® R2604943

Residential Attached

Coquitlam West

3 Bedrooms

3 Bathrooms

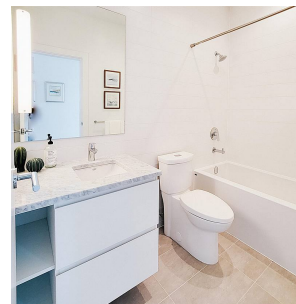
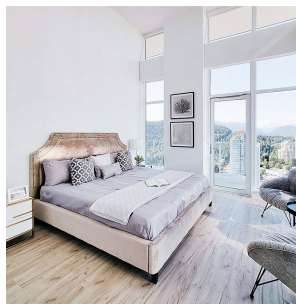
1,664 SF

\$972.61 Maintenance Fees

## FEATURES

Year Built: 2020

Listed By: Sutton Group - 1st West Realty



rennie