

29 8930 Walnut Grove Drive, Langley

\$645,000



Highland Ridge, END UNIT, SOUTH EXPOSURE with DOUBLE SIDE BY SIDE GARAGE. Living/dining/family, kitchen, 2 piece powder room plus 2 big balconies on main, three bedrooms and 2 bathrooms up, side by side washer/dryer in the laundry room & a bonus 4th bedroom/rec room with 2piece bath room downstairs leaves lots of room to grow. Very well maintained complex has newer roof, gutters, windows & fencing. This super convenient location is central to everything: just steps away from James Kennedy Elementary School, Walnut Grove Secondary School, Walnut Grove Community Centre, Walnut Grove Community Park, library coffee shops, grocery store, restaurants & public transit plus easy freeway access or Park & Ride. Come see what Walnut Grove has to offer! Open House by appointment: Sat & Sun 2-4pm

KEY INFORMATION

MLS® R2604734

Residential Attached

Walnut Grove

4 Bedrooms

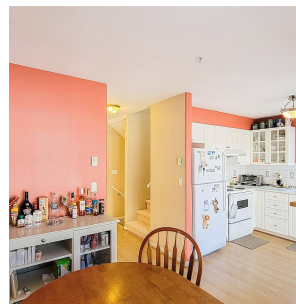
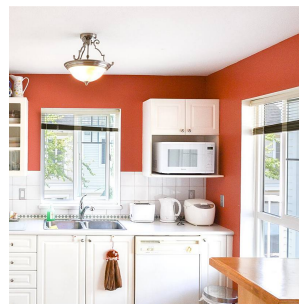
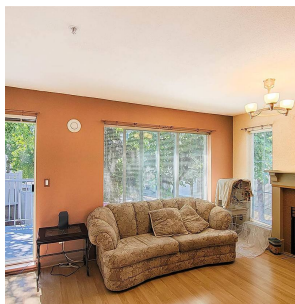
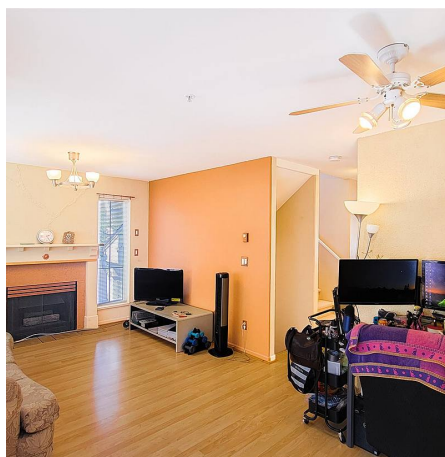
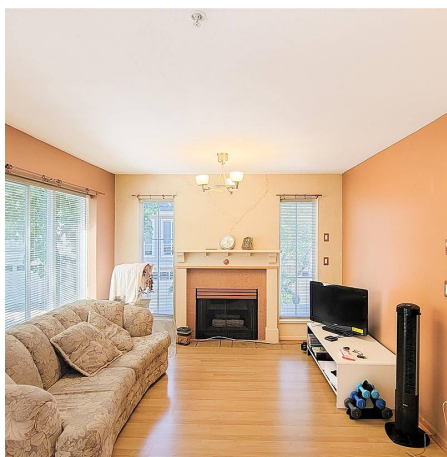
4 Bathrooms

1,516 SF

FEATURES

Year Built: 1995

Listed By: rennie & associates realty ltd.



Diana Wang PREC*
604.518.8578
dwang@rennie.com
rennie.com/dianawang

rennie