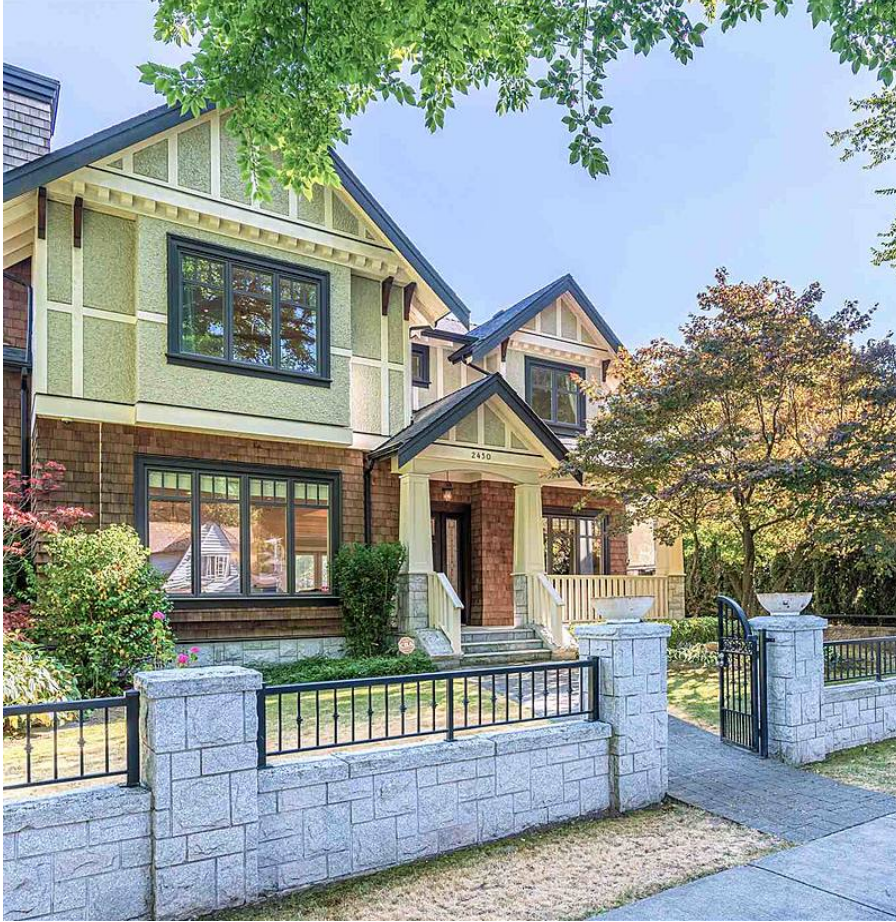


# 2450 W 35th Avenue, Vancouver

\$6,480,000



Wonderful opportunity to have your dream! Traditional charming 5 bedroom home on a quiet street in sought after neighborhood & walking distance to Kerrisdale shopping, transit, & restaurants. PLUS school district for Point Grey Secondary & Quilchena Elementary. Desirable Southern exposed sun-drenched 60' x 134' level lot, with large rear multi-level sundecks, and manicured gardens. Entertainment size living room, dining room, & solarium...with lots of wood floors and big windows throughout, plus den, kitchen & powder room on the main floor; with 3 bedrooms & one bathroom upstairs & 2 more bedrooms down. Take a moment, relax on the deck and feel the sunshine! Call for your private showing!

## KEY INFORMATION

MLS® R2605893

Residential Detached

Quilchena

5 Bedrooms

7 Bathrooms

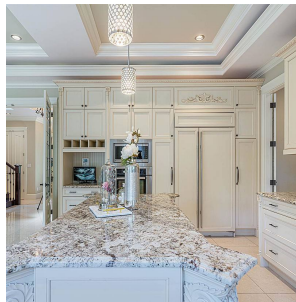
5,396 SF

8,040 SF Lot

## FEATURES

Year Built: 2012

Listed By: Pacific Evergreen Realty Ltd.



rennie