

2016 W 48th Avenue, Vancouver

\$3,480,000



Prime Kerrisdale BIG 6,450.00 SF flat LOT / Well maintained home with Amazing SOUTH facing backyard. CLOSE to all best school Maple Grove & Magee schools. IDEAL location with walking distance to nearby schools, Kerrisdale Village for your everyday needs, quick access to downtown Vancouver, golf course, parks, community centre, private schools .GREAT investment opportunity to hold or to build a dream house !

KEY INFORMATION

MLS® R2607545

Residential Detached

Kerrisdale

3 Bedrooms

1 Bathroom

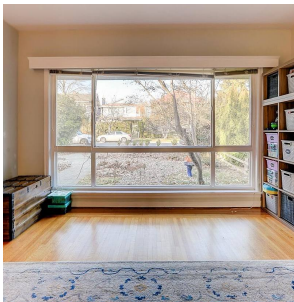
1,314 SF

6,450 SF Lot

FEATURES

Year Built: 1951

Listed By: Luxmore Realty



rennie