

810 13615 Fraser Highway, Surrey

\$609,900



A gorgeous, NEW 2 bed 2 bath home awaits you at KING GEORGE HUB ONE in the heart of Central Surrey! Well thought out floor plan w/ separated bedrooms and spa-like bathrooms, walk-in closet in the primary bedroom, in-kitchen window, superbly functional kitchen island. Quartz countertops, Blomberg & Fulgor Milano appliances and built-in microwave. Abundance of natural light throughout! Beautiful wood laminate flooring. Spacious balcony fits furniture and BBQ. Enjoy the incredible rooftop amenities with 360 degree views! Fitness Centre, theatre, lounge & shared outdoor BBQs. Parking, bike stand, and storage locker too! Just steps to SKYTRAIN, restaurants, shopping, university campuses and community services. Convenience is paramount! Built by award winning PCI Developments for peace of mind.

KEY INFORMATION

MLS® R2607786

Residential Attached

Whalley

2 Bedrooms

2 Bathrooms

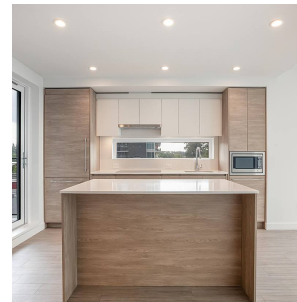
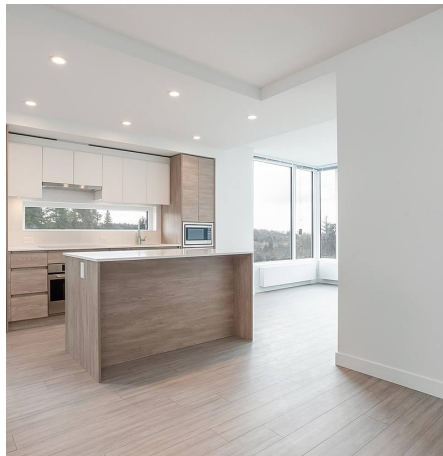
823 SF

\$389.31 Maintenance Fees

FEATURES

Year Built: 2021

Listed By: rennie & associates realty ltd.



Janette Fricker

604.787.2862

jfricker@rennie.com

rennie.com/janettefricker

rennie