

211 3663 Crowley Drive, Vancouver

\$519,900



Welcome to Latitude, built by BOSA. 25 level concrete elegant high rise in a desirable location in the heart of Collingwood Village. Rarely available 1 bed 1 bath southern exposure facing Aberdeen Park. Newly painted with brand new laminate flooring, stones throw away from Joyce Skytrain Station, Gym, meeting room and bike room. Rental/pets allowed. 652 square feet with 1 parking and 1 storage locker. Outdoor balcony is 31 square feet.

KEY INFORMATION

MLS® R2608368

Residential Attached

Collingwood

1 Bedroom

1 Bathroom

652 SF

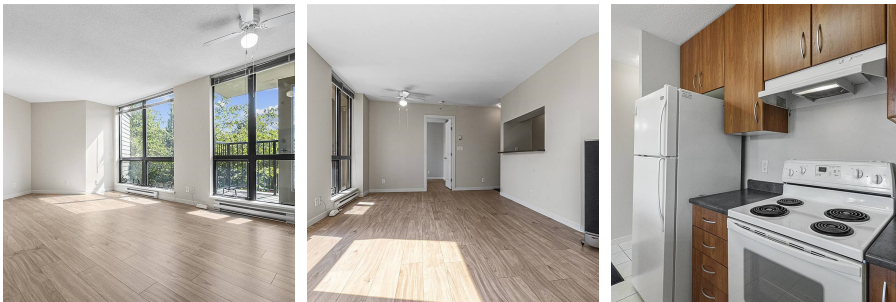
\$243.37 Maintenance Fees

FEATURES

Year Built: 2005

Views: Park

Listed By: rennie & associates realty ltd.



Danny Chow PREC*
604.765.2469
dchow@rennie.com
rennie.com/dannychow

rennie