

706 3533 Ross Drive, Vancouver

\$1,388,000



The Residences at Nobel Park by Polygon
Designed by award-winning architect Walter
Francl, This 2 bed/2bath unit just over 1000 sq-ft
offers very functional and spacious layout with 9'
ceilings and A/C. Marble accents kitchen with
high-end stainless steel brand name appliances.
Great amenities in the building for your
convenience. Walking distance to beautiful parks,
shops, restaurants and school. Perfect for live in or
investment. Book your showing today!

KEY INFORMATION

MLS® R2607588

Residential Attached

University

2 Bedrooms

2 Bathrooms

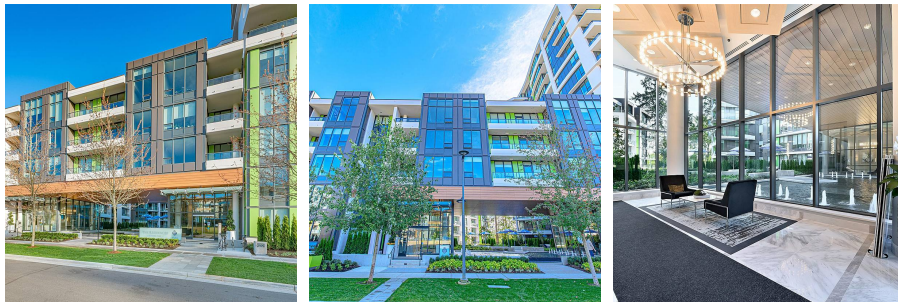
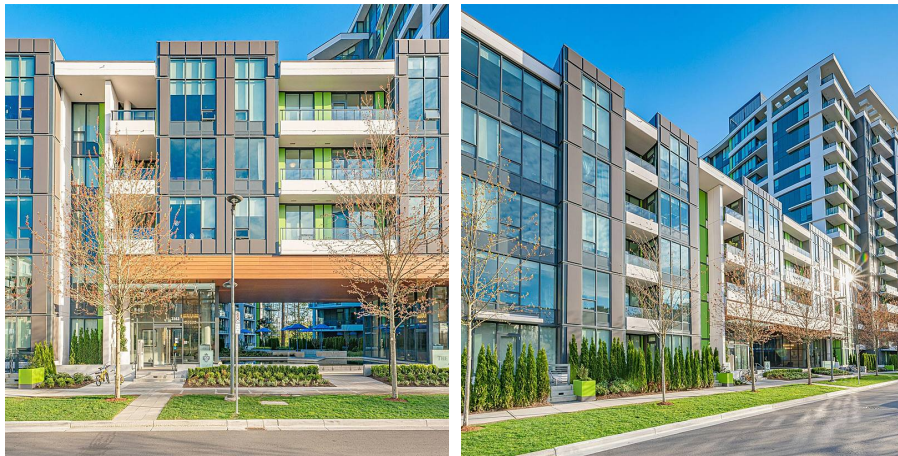
1,017 SF

\$382.00 Maintenance Fees

FEATURES

Year Built: 2020

Listed By: Sunstar Realty Ltd.



rennie