

2201 300 Morrissey Road, Port Moody

\$969,900



With over 40,000 square feet of entertaining and rejuvenating amenities at The Grande, staying close-to-home will be more appealing than ever. This large 925 sq-ft two bedroom features a 100 sq-ft covered balcony. The spacious master bedroom includes a luxurious ensuite feature a large walk-in closet, Nutheat electric floor heating, a frameless glass shower and a deep soaker tub. The kitchen is a chefs dream; outfitted with a fully integrated European appliances, marble topped breakfast bar with a separate space for formal dining. Stay cool all summer long, thanks to the integrated cooling system keeping things comfortable all year round. Built by award-winning Onni Group.

KEY INFORMATION

MLS® R2608232

Residential Attached

Port Moody Centre

2 Bedrooms

2 Bathrooms

925 SF

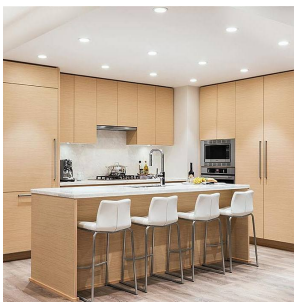
\$259.00 Maintenance Fees

FEATURES

Year Built: 2022

Views: INLET AND MOUNTAIN VIEW

Listed By: Onni Realty Inc



rennie