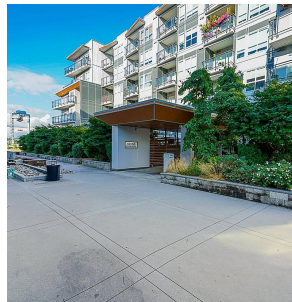
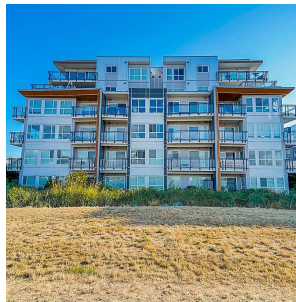
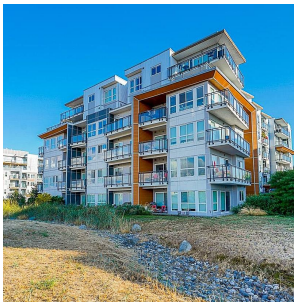
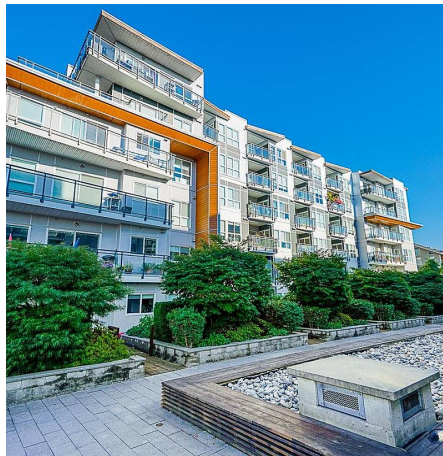
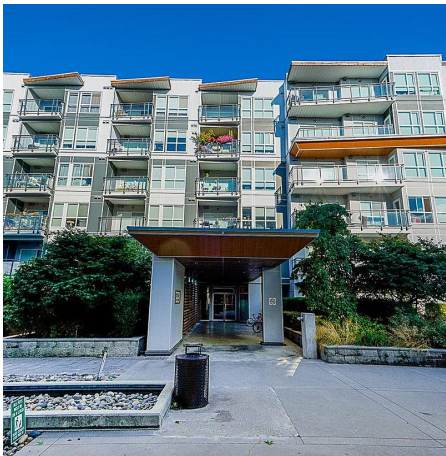


605 10155 River Drive, Richmond

\$880,000



VIEW, VIEW, VIEW. Location is everything and this corner unit has it all. Bright, spacious open concept living with 180 degree views of the Fraser River, city and north shore mountains all from your 300 sf deck. This 2 bed 2 bath home features A/C, 9'ceilings, hardwood floors, stainless steel appliance, gas stove and 2 parking stalls. Amenities include a club house, lounge, patio with BBQ, fitness centre, indoor pool and hot tub. Also enjoy the nearby trails, playground and large amounts of green space along the river. Walking distance to Bridgeport Skytrain Station and bus loop. Short commute to airport, DT Vancouver, Costco, Kwantlen Polytechnic University and various shopping Malls (Richmond Center, Lansdowne, Aberdeen etc) School catchment area of Tait Elementary and Cambie Secondary.

KEY INFORMATION

MLS® R2608624

Residential Attached

Bridgeport

2 Bedrooms

2 Bathrooms

1,097 SF

\$648.14 Maintenance Fees

FEATURES

Year Built: 2014

Views: River, City, Mountain

Listed By: Prominent Real Estate Services

rennie