

1204 6595 Willingdon Avenue, Burnaby

\$459,900



Prime Metro town Location! Huntley Manor by Central Park. This very well maintained building offers the best value in the Metro town area! This Neat and Spacious one bedroom unit with breath taking mountain and city view offers its own in-suite laundry, a storage locker, and one parking. Lots of renovations with floor, kitchen and bathroom. All that with a low maintenance fee that includes both Heat and Hot water. Building amenities include Gym, Billiard/table tennis room, Party room, Racquetball Court, and sauna. Walking distance to Shopping, Community Centre, Library, Central Park, and Skytrain. Move In ready condition! Don't miss out on this one, book your appointment today!

KEY INFORMATION

MLS® R2608321

Residential Attached

Metrotown

1 Bedroom

1 Bathroom

746 SF

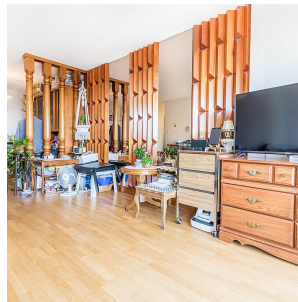
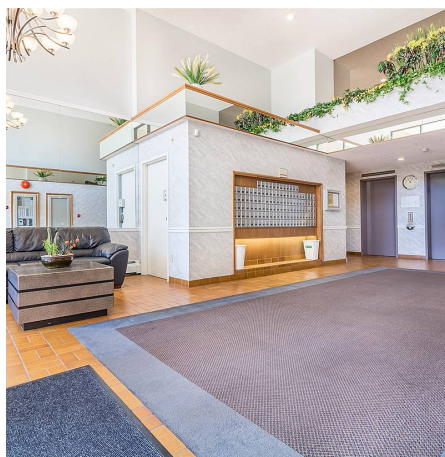
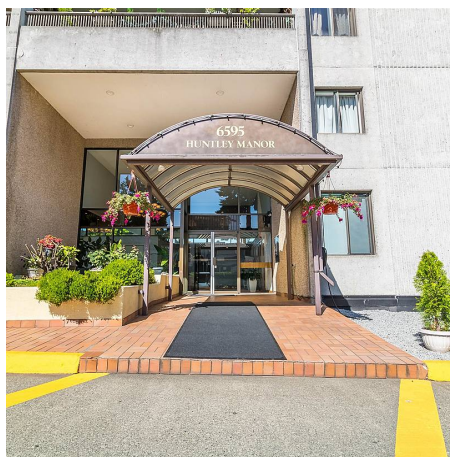
\$232.00 Maintenance Fees

FEATURES

Year Built: 1983

Views: City and Mountain

Listed By: LeHomes Realty



rennie