

2402 8031 Nunavut Lane, Vancouver

\$1,289,900



Stunning Corner Sky-Home at MC2! NE Corner 2 Bdrm/Den/2 Bath w/ 270 degree panoramic views of the NS Mtns, Winona Park & the city horizon. This open floor plan feat. Flr to ceiling windows, O/H ceilings, laminate flrs in the livrm/ dinrm that leads to massive wrap around covered deck. The modern sleek kitch boasts Liebherr fridge & D/W, Bloomberg wall oven, stove & solid stone ctrs. Enjoy picture perfect views from the den/home office. Relax in the separated BDRMS w/ adjoining ensuites. The mst bdrm w/ huge w/in closet, 5 pc ensuite w/ dbl sinks, soaker tub & separate shower. Great amenities incl. concierge, meeting rm & gym. Ideal location, steps to the Canada Line, JW Sexsmith Elem & Sir W Churchill Sec & the shops & theatres at Marine Gateway. 1 Parking, 1 Locker incl.

KEY INFORMATION

MLS® R2608667

Residential Attached

Marpole

2 Bedrooms

2 Bathrooms

1,090 SF

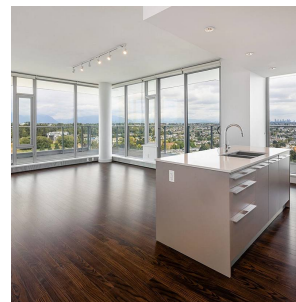
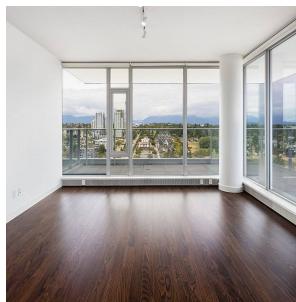
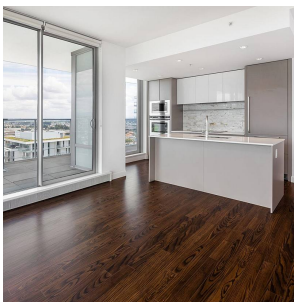
\$820.92 Maintenance Fees

FEATURES

Year Built: 2016

Views: PANORAMIC CITY & MTN VIEWS

Listed By: rennie & associates realty ltd.



Salina Kai PREC*
604.773.7013
skai@rennie.com
rennie.com/salinakai



Danny Chow PREC*
604.765.2469
dchow@rennie.com
rennie.com/dannychow

rennie