

112 1228 Marinaside Crescent, Vancouver

\$2,688,000



WOW. Imagine a waterfront house in the city - direct access to your door without the need of elevators. An attached double private garage (and extra parking), large attached walk-in storage and a spacious terrace overlooking the marina. All of that with 2 bedrooms, a solarium and den and large principal rooms. This 1800 sf townhome is in pristine original condition. Just think of the possibilities!

KEY INFORMATION

MLS® R2609397

Residential Attached

Yaletown

2 Bedrooms

3 Bathrooms

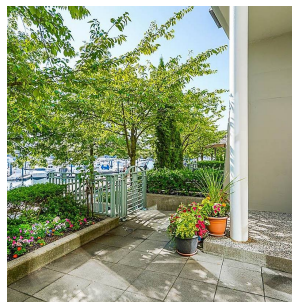
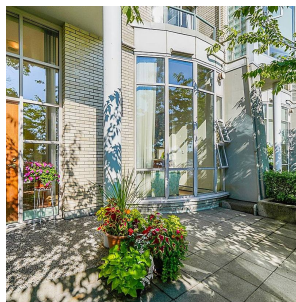
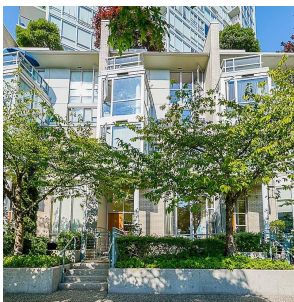
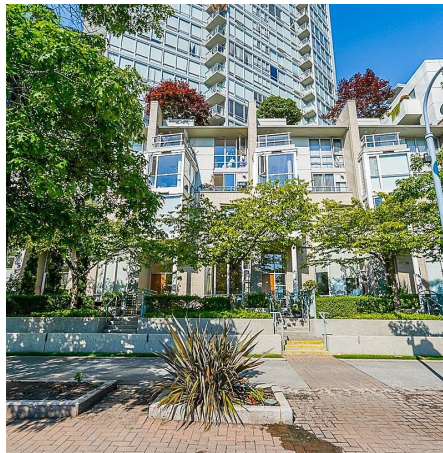
1,871 SF

FEATURES

Year Built: 1997

Views: Water and Marina

Listed By: RE/MAX Crest Realty



rennie