

4 5476 Brydon Crescent, Langley

\$949,900



Brydon Living - SPACE FOR LIFE - Final Phase Two! Modern architecture with great curb appeal and front to back Rooftop patio views of Langley City! Enjoy evening sunsets as each home is constructed with balconies on the main floor and spacious front to back Rooftop patios for all your entertainment/relaxation needs. Fully functional layouts designed for grand gourmet kitchens providing quartz countertops, top quality appliances and optional cabinetry. Spacious formal living area with plush carpeting in all bedrooms, hallways & stairways providing comfort throughout the units. Located within short distance to schools, rec centres, parks/trails, shopping, restaurants, public transit & future Skytrain. FINAL PHASE TWO! Type D1 CORNER UNITS: 1877 SF + 684 SF Rooftop + 400 SF Garage.

KEY INFORMATION

MLS® R2609264

Residential Attached

Langley City

4 Bedrooms

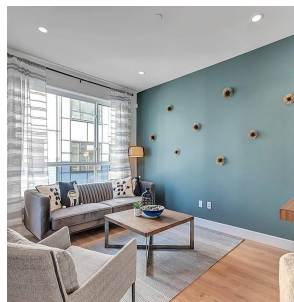
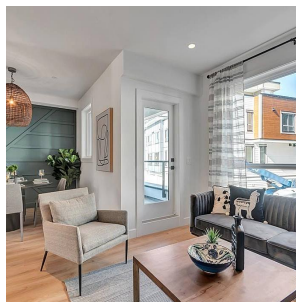
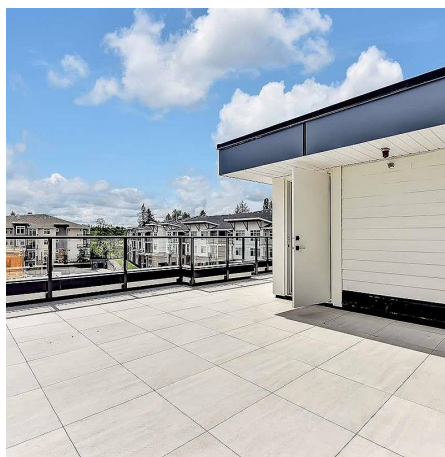
4 Bathrooms

1,877 SF

FEATURES

Year Built: 2021

Listed By: rennie & associates realty ltd.



Candace Cheung PREC*
604.649.4328
ccheung@rennie.com
rennie.com/candacecheung

rennie