

14832 103a Avenue, Surrey

\$1,880,000



Potential Apartment Site



Excellent Corner Lot 8,220 SF. for your investment! Multi-Family redevelopment and land assembly potential. Land Use: Multiple Residential. Designation may increase up to 2.5 FAR within the city Centre Plan area. A block away from Guildford Mall. 2 blocks walk to major shopping, Walmart, Real Canadian Supercenter. House offers 6 bedrooms and 3 bathrooms. Large storage shed located at the backyard.

KEY INFORMATION

MLS® R2610940

Residential Detached

Guildford

5 Bedrooms

3 Bathrooms

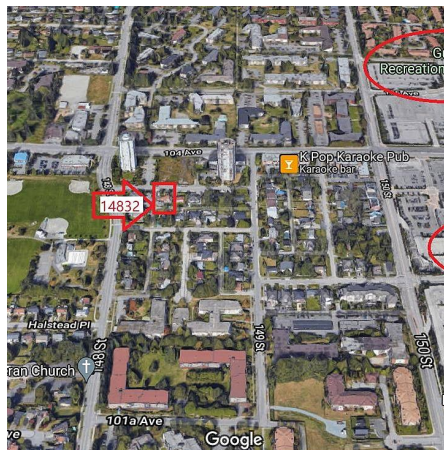
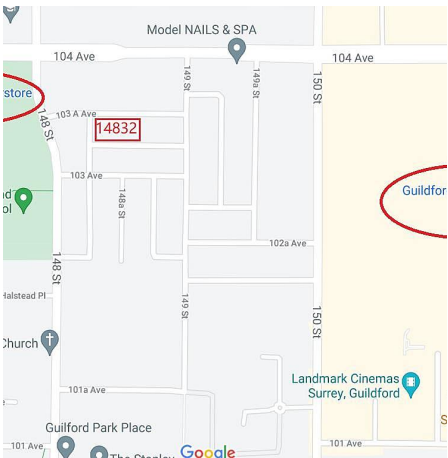
1,768 SF

8,220 SF Lot

FEATURES

Year Built: 1958

Listed By: Royal Pacific Realty (Kingsway) Ltd.



rennie