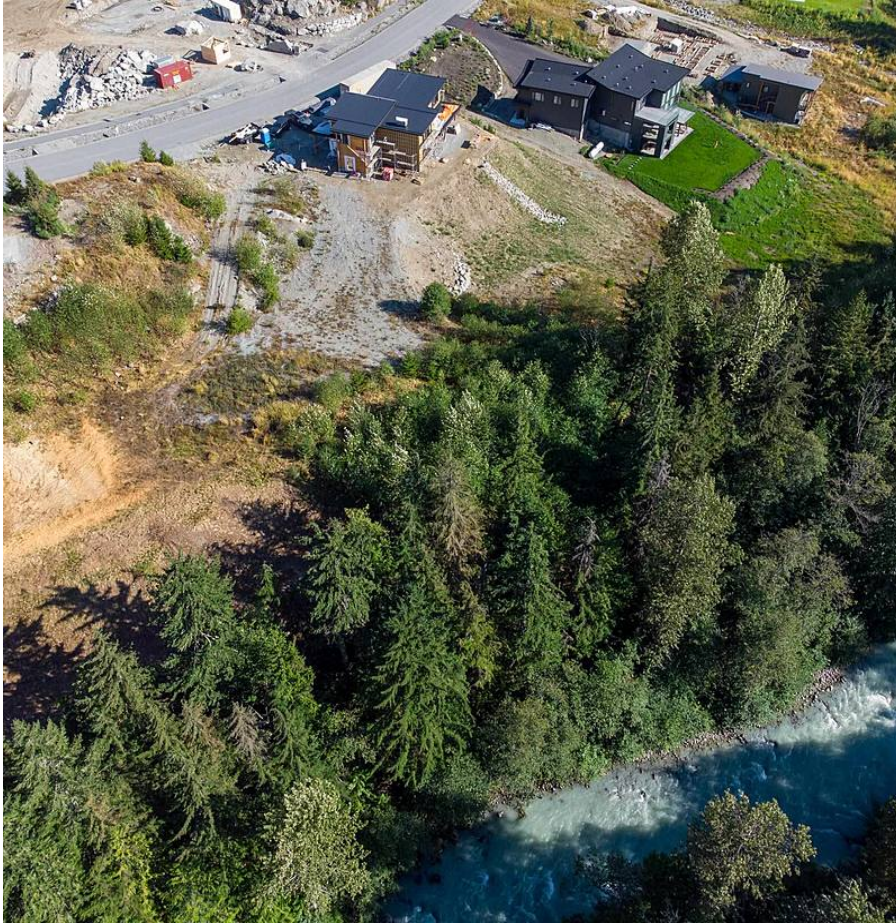


9121 Riverside Drive, Whistler

\$1,350,000



If you are looking for privacy, a spacious lot where you can build a carriage house in addition to your principal residence, and still be within 12 minutes of Whistler Village, 9121 Riverside Drive is where you will want to plan your dream home. With 1.787 acres you can build a home of up to 6,995 square feet plus an auxiliary building of 2,150 square feet. This lot slopes down to the Green River and offers spectacular mountain views. Some trees have recently been removed so you can visualize your access to the river. Ask for more detail about the design guidelines and for a tour of this spectacular lot. GST has been paid.

KEY INFORMATION

MLS® R2611236

Land Only

Wedge Woods

0 Bedrooms

0 Bathrooms

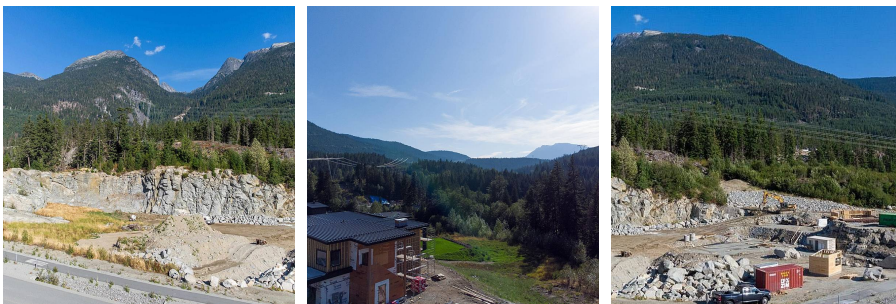
0 SF



FEATURES

Views: MOUNTAIN

Listed By: RE/MAX Sea to Sky Real Estate



rennie