

2 32633 Simon Avenue, Abbotsford

\$619,900



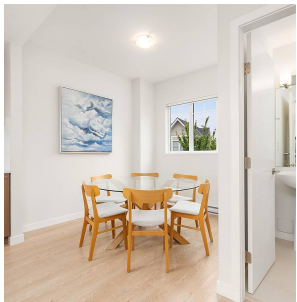
Bright, functional and open, this CORNER home at ALLWOOD PLACE is waiting for you to call it home. This Townhome is 2 Bedrooms, 2.5 Bathrooms plus Den with features that include; Quartz Counter-tops, Stainless Steel appliances, Wide plank flooring, Front loading washer/dryer, with a large deck and powder room on the main floor for hosting friends. Located within walking distance of all the shops, schools, transit and services one would need.

KEY INFORMATION

MLS® R2611469
Residential Attached
Abbotsford West
2 Bedrooms
3 Bathrooms
1,213 SF

FEATURES

Year Built: 2017
Listed By: rennie & associates realty ltd.



Lorenzo Daminato PREC*
604.657.8121
ldaminato@rennie.com
rennie.com/lorenzodaminato

rennie