

3909 13495 Central Avenue, Surrey

\$929,000



The Residences, Surrey's Flagship Residence at 3 Civic Plaza Development. This 39th FLOOR, 1248 square foot, 2 bedroom and den, 2 bath property features high-end finishing. Large 102 square foot balcony with unobstructed views. Steps to Skytrain, Central City Mall, SFU, KPU, Civic Plaza, City Hall & Hotel, coffee shops & library, & planned LRT system. TWO PARKING stalls and locker included. This premium condo has an open concept layout with floor-to-ceiling windows, exercise centre, elevator, in-suite laundry. You won't find a better location close to this many amenities. No GST. Rentals are allowed.

KEY INFORMATION

MLS® R2611903

Residential Attached

Whalley

2 Bedrooms

2 Bathrooms

1,248 SF

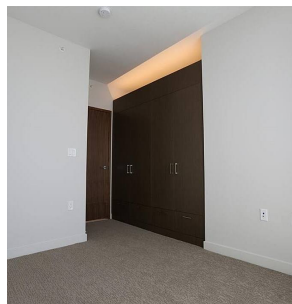
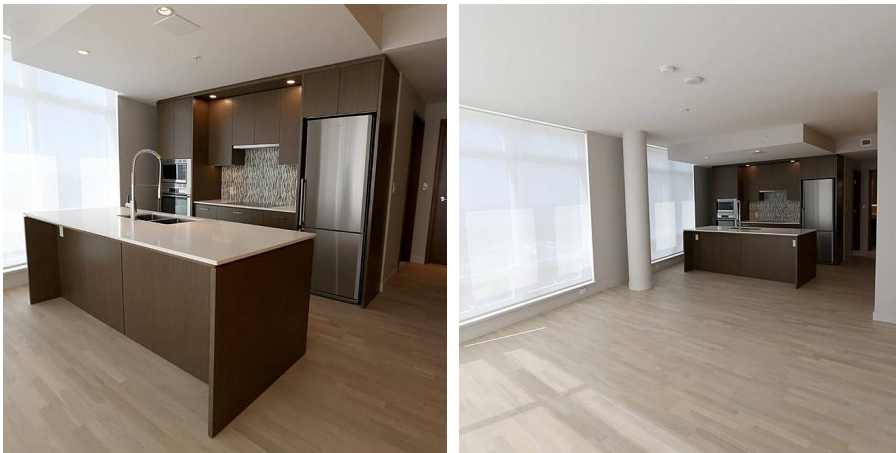
\$683.78 Maintenance Fees

FEATURES

Year Built: 2018

Views: City & Mountains

Listed By: Century 21 Coastal Realty Ltd.



rennie