

# 37 46211 Promontory Road, Chilliwack

\$1,099,000



Beautiful New 4 bedroom 3.5 bath with fully finished basement and bonus Bunker in the desirable Iron Horse Development. No GST! Natural gas fireplace w/ custom surround, extensive millwork, built in closet organizers, double vanity sinks, covered patio looks over fully landscaped fenced private yard. . Iron Horse, by Diverse Properties- the same developers of Garrison Crossing and River's Edge. At Iron Horse, Greenlane pathways replace roadways, and colorful homes front meandering trails and Iron Horse park is a year round gathering place. Amenities are within walking distance or a short drive. Estimated Completion Jan 30, 2022

## KEY INFORMATION

MLS® R2612031

Residential Detached

Chilliwack

4 Bedrooms

4 Bathrooms

3,000 SF

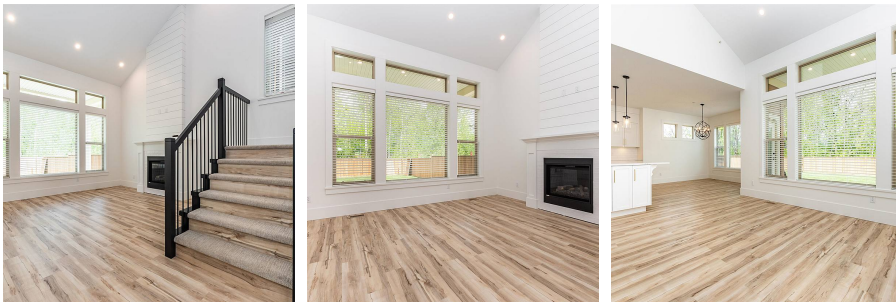
4,021 SF Lot

## FEATURES

Year Built: 2022

Views: Mountains

Listed By: RE/MAX Nyda Realty Inc.



rennie