

307 9623 Manchester Drive, Burnaby

\$518,000



Location! Location! Location! This 2 bedrooms quiet corner unit offers open floor plan with spacious living & dining room that can easily accommodate most furniture, floor to ceiling windows with plenty of natural light. Complex features a gym, hot tub, sauna and tennis court! Amazing central location just off Lougheed Hwy, you are walking distance to skytrain, public transport, schools, SFU, shopping, restaurants and nature trails. Across the road you will find the manicured Keswick Park which has tennis & basketball courts, splash pad and playground for the kids. Perfect first home buyer or investment opportunity! Welcome Home!

KEY INFORMATION

MLS® R2613077

Residential Attached

Cariboo

2 Bedrooms

2 Bathrooms

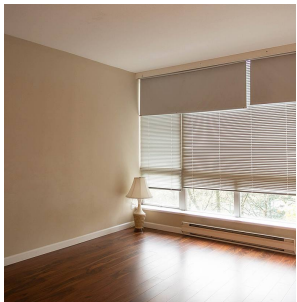
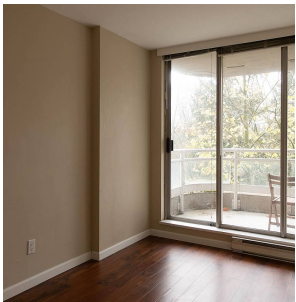
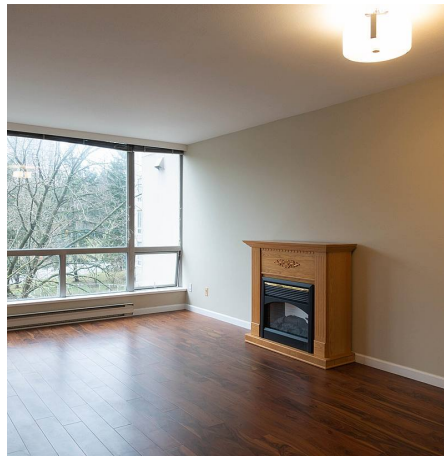
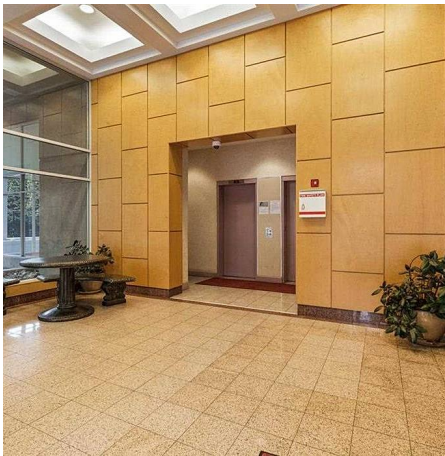
800 SF

\$317.52 Maintenance Fees

FEATURES

Year Built: 1994

Listed By: Emily Oh Realty



rennie