

1601 2004 Fullerton Avenue, North Vancouver

\$549,000



Fully Renovated south city skyline and water views from this one bedroom suite in Woodcroft's popular Whytecliff building. New SS appliances, quartz countertop, laminate flooring. Very sunny and private, this suite has panoramic views from Burnaby to the West End and includes Stanley Park, Lions Gate Bridge and English Bay! Riverfront exposure. These suites on the higher floors are always popular and seldom available. Building has completed many infrastructure upgrades in recent years including hot and cold water plumbing replacement, exterior concrete spalling repairs, balcony railing replacement, elevator rebuilding and roof replacement. Woodcroft is located on 13 acres of manicured grounds in North Vancouver's lower Capilano neighbourhood. 24/7 manned security for peace of mind.

KEY INFORMATION

MLS® R2613734

Residential Attached

Pemberton

1 Bedroom

1 Bathroom

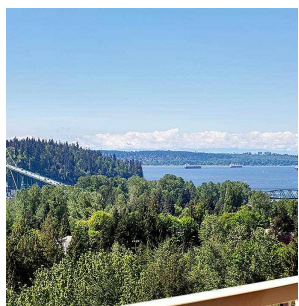
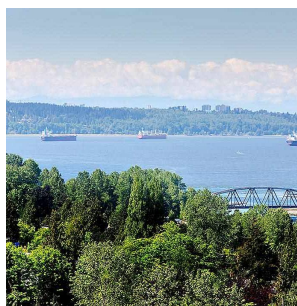
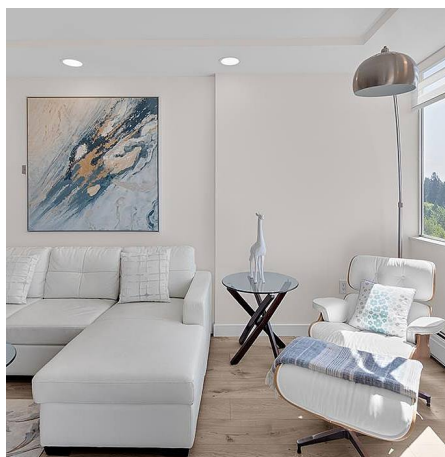
609 SF

\$401.19 Maintenance Fees

FEATURES

Year Built: 1974

Listed By: Royal LePage Sussex



rennie