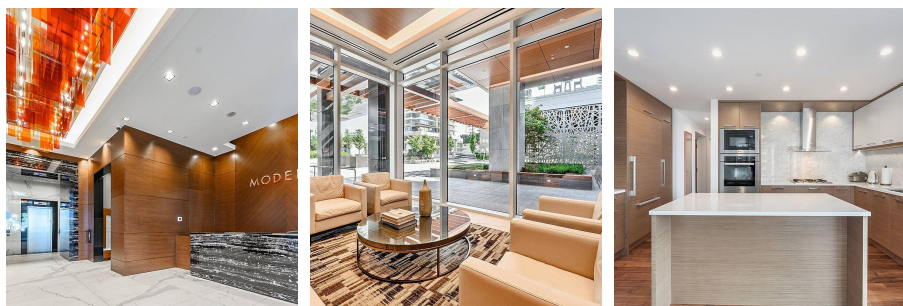
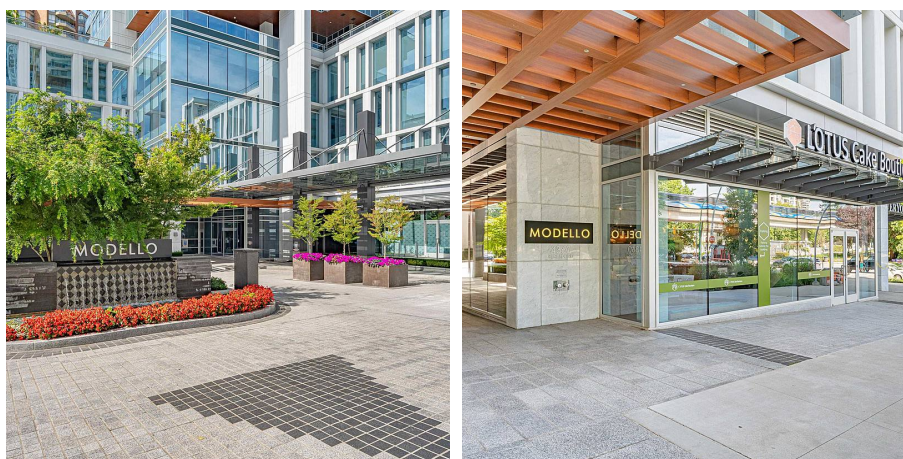


1006 4360 Beresford Street, Burnaby

\$1,399,900



Central location, doorsteps to skytrain, shopping mall, movie theater, huge rental cash flow home. Spacious 3 bed 2 bath, close to 1298sqft of living space. Multiple Award Winners Building Modello sets a new benchmark in Metro Vancouver Development. Poised to be a landmark building with distinct character, the finest materials are integrated throughout. Spacious homes and unrivaled hotel-style amenities are finished to the highest standard. Over 12,000 sqft of indoor and outdoor amenity space, 37 storeies, only 163 residences. The entire fifth floor podium level is designated for the exclusive use of Modello residents. A five-star setting to host a larger gathering, creating an extraordinary extension to the home, Port cochere and full-service concierge provide a dramatic sense of arrival.

KEY INFORMATION

MLS® R2613769

Residential Attached

Metrotown

3 Bedrooms

2 Bathrooms

1,298 SF

\$823.27 Maintenance Fees

FEATURES

Year Built: 2017

Views: MOUNTAIN AND CITY VIEWS

Listed By: rennie & associates realty ltd.



Tony Liang PREC*
604.781.9988
tliang@rennie.com
rennie.com/tonyliang

rennie