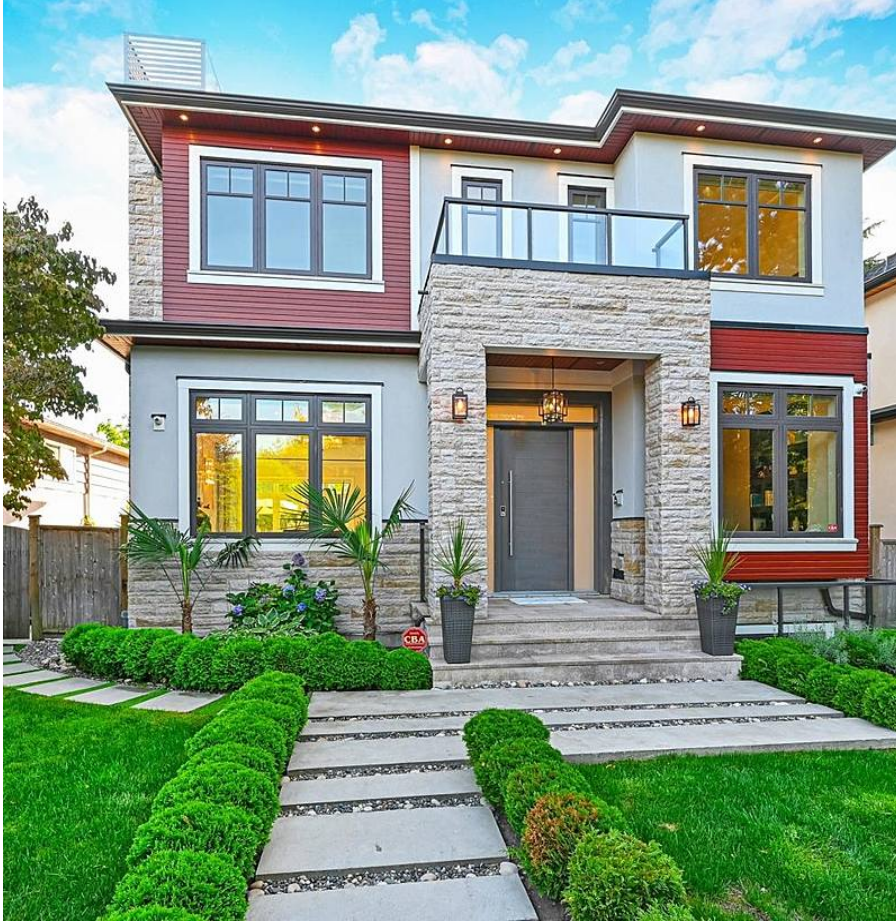


4323 Valley Drive, Vancouver

\$5,790,000



Gorgeous mansion located in the heart of Quilchena. This home sits on a 51.8'x120' (6216 sq. ft.) lot & it offers over 4,100 sq. ft. of spacious floor plan w/ superior construction & finest finishing. Main floor w/ 11' high ceiling, open concept living, dining and family rooms, delightful gourmet kitchen and wok kitchen equipped w/ high end Miele, SubZero & Wolf appliances, marble countertops, A/C, HRV & security system. 4 roomy bedrooms upstairs, all ensuites. Versatile basement w/ a huge rec. room with wet bar, gym, sauna/steam room & 1 guest bedroom. 3 car garage & beautiful landscaping. Just steps to Prince of Wales Sec. catchments & Arbutus Mall. Close to Trafalgar Elem., LFA, York House private schools, shopping at Kerrisdale Village, restaurants & cafe.

KEY INFORMATION

MLS® R2613833

Residential Detached

Quilchena

5 Bedrooms

6 Bathrooms

4,115 SF

6,216 SF Lot

FEATURES

Year Built: 2018

Listed By: Royal Pacific Realty Corp.



rennie