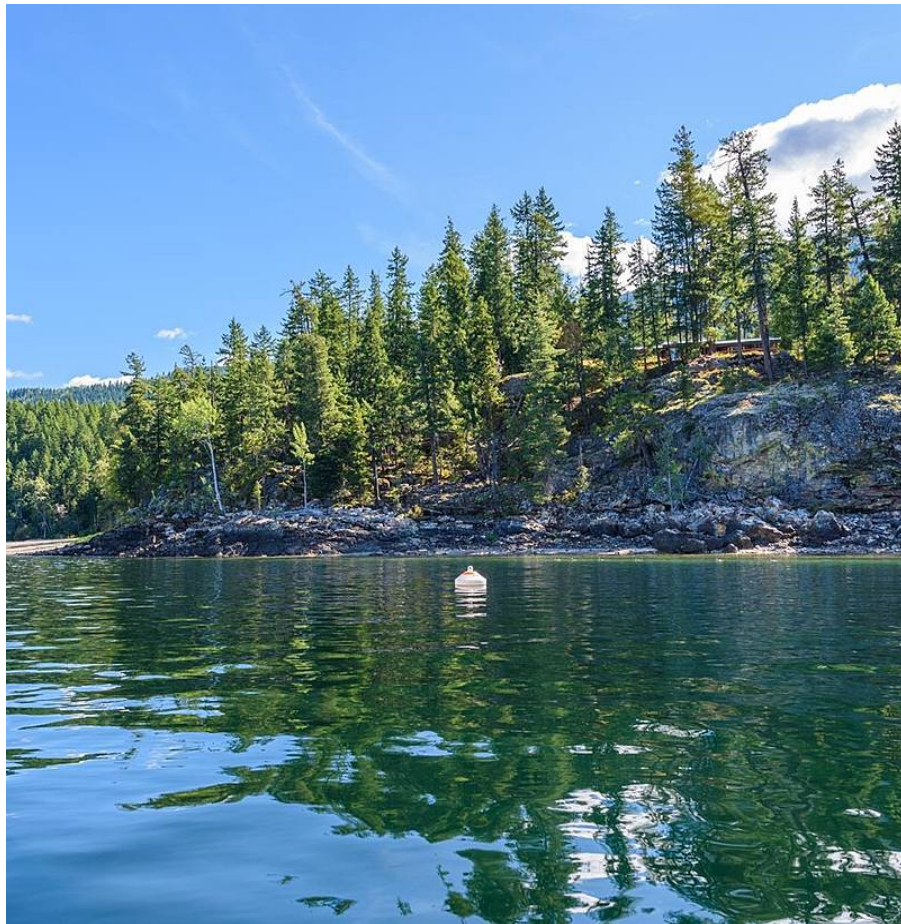


# Lot 4 N Queest Anstey Arm, No City Value

\$550,000



Waterfront and Road Access (2.38 Acres – LOT 4) on the east side of Anstey Arm Shuswap Lake – North Queest , Sicamous, BC. This property is one of Five Waterfront Lots + a 6th Lot located behind the five that is on 33 Acres. All lots are being sold individually by same owner (Six PID's). See location map in MLS listing pictures or go to realtor's web site for aerial drone video and feature sheet. Rare opportunity to live on spectacular Anstey Arm at an affordable price. Enjoy beautiful sandy beaches of Roberts Bay Provincial Park and Pete Martin Bay. Property next door (Lot A, 175 Acres that is also for sale – call LB for more details)– Current access by boat that takes 20 mins from Sicamous or 1 hour via forestry road that is on Google Maps.

## KEY INFORMATION

MLS® R2614229

Land Only

BC

0 Bedrooms

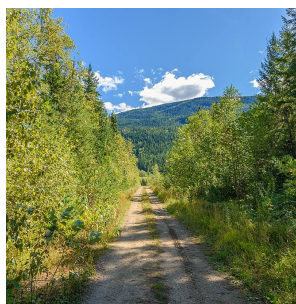
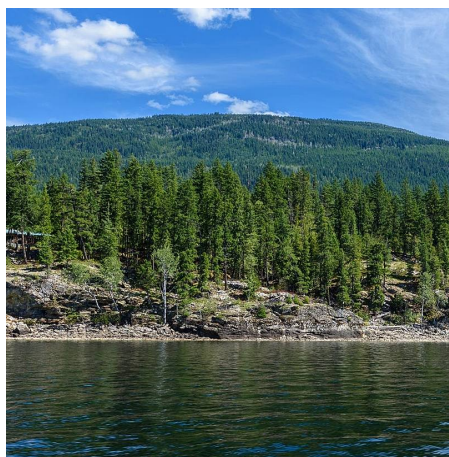
0 Bathrooms

0 SF

## FEATURES

Views: Water, Mountain

Listed By: RE/MAX Crest Realty



rennie