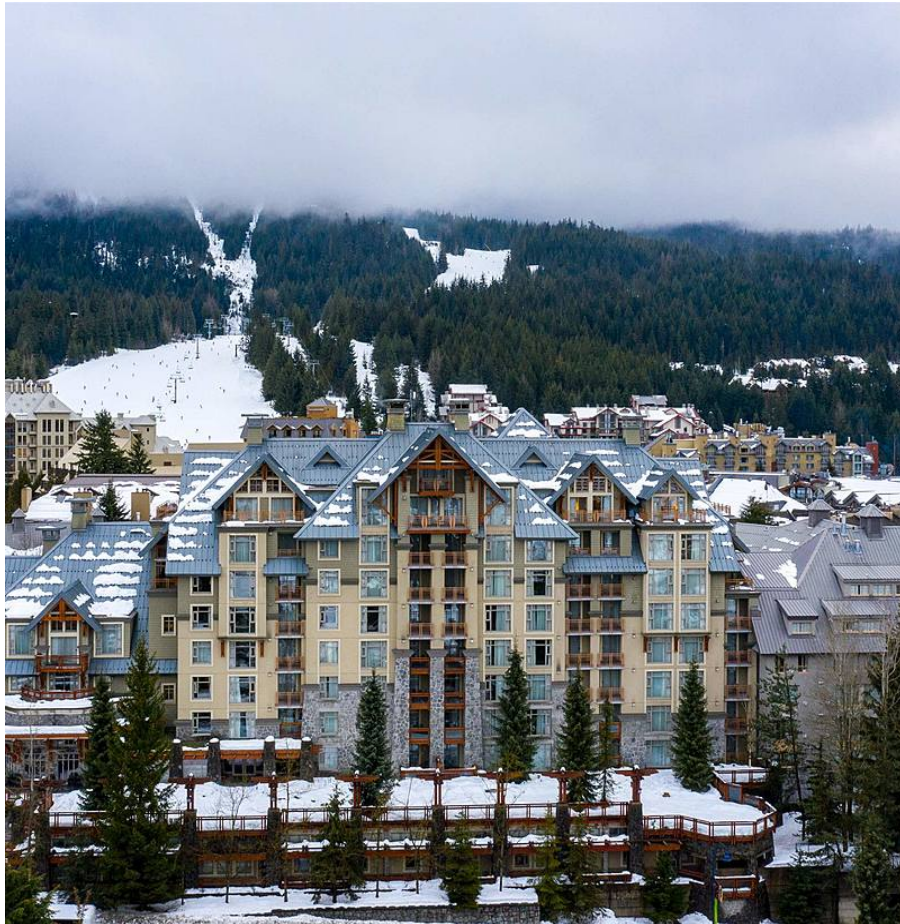


9901 4299 Blackcomb Way, Whistler

\$2,499,000



Enjoy luxury at its finest with this rarely available, top-floor penthouse suite in the Pan Pacific Whistler Village Centre. From its opulent amenities to its central Village location, this stunning residence is sure to impress. Airily vaulted ceilings and floor-to-ceiling windows in the main living area frame southwestern mountain views that can also be enjoyed from the bedrooms. The open plan living space with a cozy gas fireplace is a home away from home with ample space for relaxing or entertaining. A full chef's kitchen and four rooftop patios/decks off of the living area and each of the bedrooms set this suite apart from the rest. A guaranteed revenue generator, this investment property is in an award-winning hotel that places all of Whistler's amenities at your feet.

KEY INFORMATION

MLS® R2614506

Residential Attached

Whistler Village

3 Bedrooms

3 Bathrooms

1,562 SF

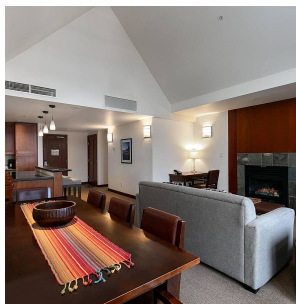
\$1,712.00 Maintenance Fees

FEATURES

Year Built: 2005

Views: Southwest Mountain Views

Listed By: Whistler Real Estate Company Limited



rennie