

9727 Ladner Trunk Road, Delta

\$12,498,888



**PRIME LOCATION
APPROXIMATELY 55 ACRES**

LOCATION!LOCATION!!An incredibly desirable location: Delta. A grand frontage of 1118 ft means no problems maneuvering all your large farm vehicles into this prime farmland of 54.84 acres, has 3 legal addresses, with 3 existing dwellings currently on 2 addresses. Come and enjoy the income potential from a duplex and registered mobile home, or live in one of the dwellings and rent out the other 2 dwellings, while you build your dream home. Easy access to Hwy 99, Delta Port, Ferries, and Vancouver. Shopping/amenities are only 10 minutes away with your choice of Ladner or Delta shops at your disposal. Property is in central location with surrounding restrains, gas stations, and transportation routes. A great place with a great view of the mountains and an ideal spot to see the sunsets/rises!

KEY INFORMATION

MLS® R2614324

Residential Detached

East Delta

3 Bedrooms

1 Bathroom

3,162 SF

FEATURES

Year Built: 9999

Views: NORTH SHORE MOUNTAIN, SUNSETS

Listed By: Planet Group Realty Inc.



GRAND FRONTAGE OF 1118 FT



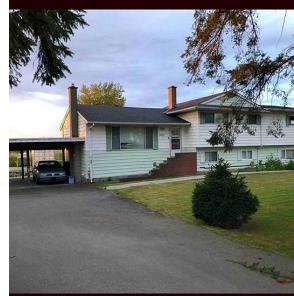
LIFETIME OPPORTUNITY



EASY ACCESS TO HWY 99



2 RESIDENTIAL AREAS



rennie