

5125 S Whitworth Crescent, Delta

\$1,799,000



Absolutely the best 10 out of 10 LOCATION with 2 LOT SUBDIVISION POTENTIAL too! Next to a park, and on one of the most sought after streets in Ladner- Whitworth Crescent! Steps to DSS, Ladner Elementary and Sacred Heart Schools. This spacious 2953SF 6 bedroom, 3 bath home is perfect for the busy family who needs a comfortable layout or for an extended family. Also features a bonus double garage and workshop for the handyman. This huge 11,657 sf sun drenched private fenced mature landscaped gardens offer a great opportunity for a FUTURE INVESTMENT OPPORTUNITY with 80' Frontage. THE IDEAL FAMILY HOME FOR NOW AND INVEST FOR THE FUTURE.

KEY INFORMATION

MLS® R2615176

Residential Detached

Ladner Elementary

6 Bedrooms

3 Bathrooms

2,953 SF

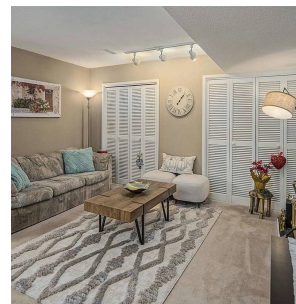
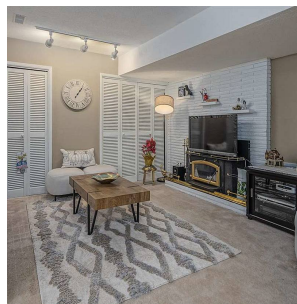
11,657 SF Lot

FEATURES

Year Built: 1966

Views: PARK

Listed By: Royal LePage Regency Realty



rennie