

802 8238 Saba Road, Richmond

\$658,000



Central location!.Prestigious Chancellor. Bright, Sunny,Functional floor plan with kitchen over looking Dinning and Living room. Spacious (fit house furniture) unit in unbeatable super central convenient location in the heart of Richmond. Walking distance to skytrain. A short walk to Richmond Public market, Richmond Centre, and various businesses and shopping center. Ready to move in. Very well kept and comfortable living.Please call to book your private showings.

KEY INFORMATION

MLS® R2615315

Residential Attached

Brighthouse

2 Bedrooms

2 Bathrooms

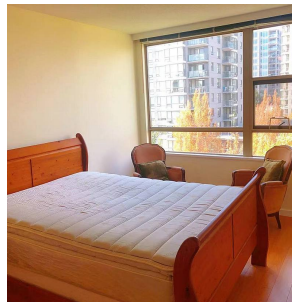
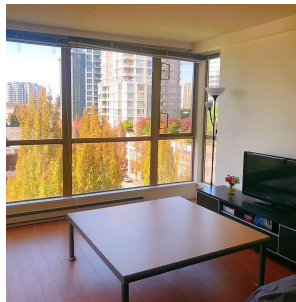
944 SF

\$399.00 Maintenance Fees

FEATURES

Year Built: 1997

Listed By: Royal Pacific Realty Corp.



rennie