

# 2305 2077 Rosser Avenue, Burnaby

\$998,000



Immaculate 2 bed/2 bath corner unit at the highly desired Vantage! Open concept floor plan surrounded by floor to ceiling windows for beautiful year-round views; stainless steel appliances, laminate flooring in the living spaces and a fabulous, sizable balcony. Well managed strata with 24 hour concierge, well-equipped gym, party room & sauna. Perfectly situated in the heart of Brentwood: access an abundance of shops and restaurants, as well as transit within a short walking distance. 1 parking & 1 locker included. The perfect family home!

## KEY INFORMATION

MLS® R2615755

Residential Attached

Brentwood Park

2 Bedrooms

2 Bathrooms

1,105 SF

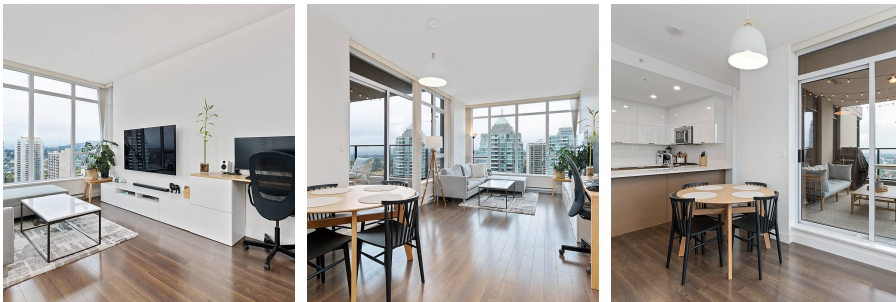
\$464.25 Maintenance Fees

## FEATURES

Year Built: 2013

Views: mountains

Listed By: Ohmproperty



rennie