

1905 4488 Juneau Street, Burnaby

\$1,280,900



An exclusive, move-in ready Private Collection residence at Bordeaux built by award winning developer Solterra. This home features a 433sf wrap around balcony with expansive SW views of the Metrotown skyline. Floor to ceiling windows throughout the home to maximize natural light with AC/Heating. Private balcony off the M/B, spa-inspired ensuite with heated floors, free-standing tub & walk in rain-shower. A stunning imported kitchen cabinetry from Italy with over sized appliances including Liebherr & Fulgor Milano brands. 2 parking stalls & 1 storage locker. Fabulous amenities: business centre, gym, yoga, social lounge, BBQ area, children's playground & more. Don't miss this incredible opportunity to own in an irresistible community. Open Sat-Wed 12-5pm.

KEY INFORMATION

MLS® R2616170

Residential Attached

Brentwood Park

2 Bedrooms

2 Bathrooms

997 SF

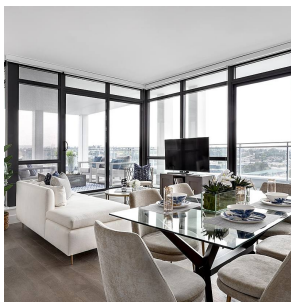
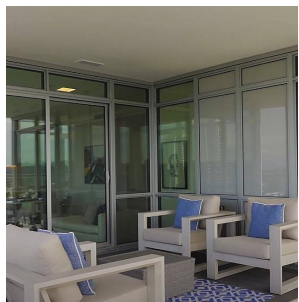
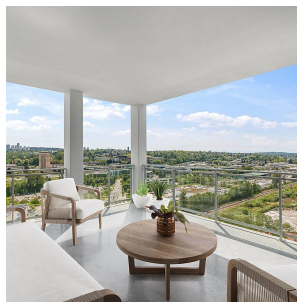
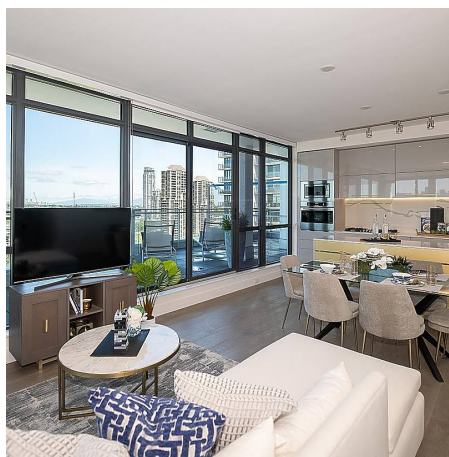
\$520.52 Maintenance Fees

FEATURES

Year Built: 2021

Views: Metrotown Skyline

Listed By: Multiple Realty Ltd.



rennie