

1910 2008 Rosser Avenue, Burnaby

\$949,000



2 BR 2 BA + den at the popular SOLO District's Stratus by Appia (Bosa) located in the heart of Brentwood, has spectacular SW exposure with an extra large balcony to enjoy your breathtaking view of downtown and Metrotown. 19th floor 962 sq ft corner unit with functional & elegant floor plan boasts 9 ft ceilings, large, open kitchen w/ quartz countertops and S/S appliances, 2 separated bedrooms and den to set up your home office. Amenities include: concierge, fitness centre, steam room/sauna, entertainment lounge, guest suite, outdoor BBQ and dog park. Geothermal heating and AC are included in strata fees. Steps to Brentwood Skytrain Station, Brentwood Mall, Save On Foods, Whole Foods, Shoppers Drug Mart, restaurants and more. Easy transit to BCIT & SFU. Parking and storage included.

KEY INFORMATION

MLS® R2617102

Residential Attached

Brentwood Park

2 Bedrooms

2 Bathrooms

962 SF

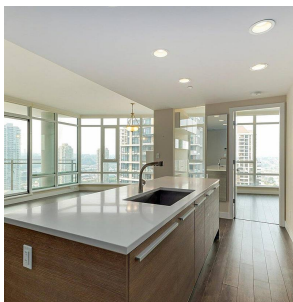
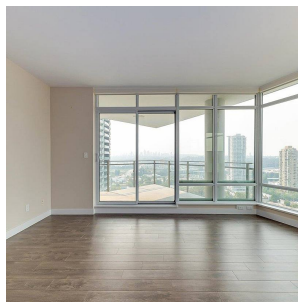
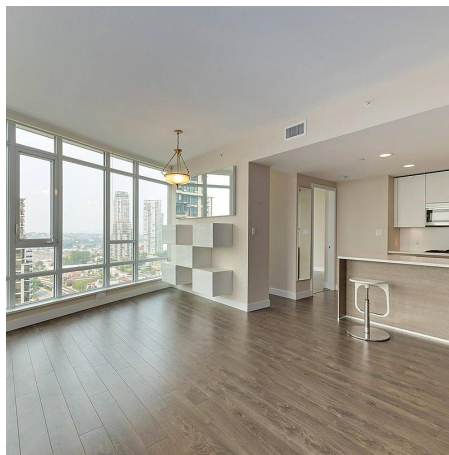
\$657.00 Maintenance Fees

FEATURES

Year Built: 2015

Views: City and Metrotown

Listed By: Sutton Group - 1st West Realty



rennie