

411 258 Nelson's Court, New Westminster

\$499,900



Welcome home to The Columbia by master plan developer Wesgroup! This spacious 1 bedroom home is ready for immediate move-in and offers direct views over the courtyard and out to the Fraser River. Interior finishes include kitchen island, quartz countertops, laminate flooring, Kohler faucets, 5 burner gas range and lots of great storage solutions. 1 secure underground parking stall, 1 storage locker included and access to Club Central, a 10,000 SF private amenity gym and clubhouse. Pets and rentals allowed. Prime location - steps to Sapperton SkyTrain, Save-On Foods, Shoppers Drug Mart, Browns Social House, Royal Columbian Hospital and a short drive to Pier Park/NW Quay and Hwy 1. This condo and neighbourhood has everything you want! OPEN SEP 17/18/19, 1-4PM, please call for appointment.

KEY INFORMATION

MLS® R2617154

Residential Attached

Sapperton

1 Bedroom

1 Bathroom

564 SF

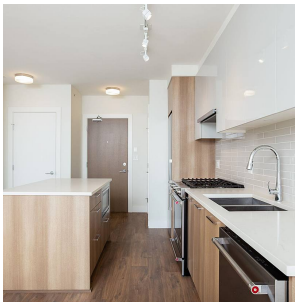
\$316.40 Maintenance Fees

FEATURES

Year Built: 2020

Views: FRASER RIVER

Listed By: rennie & associates realty ltd.



Salina Kai PREC*
604.773.7013
skai@rennie.com
rennie.com/salinakai



Danny Chow PREC*
604.765.2469
dchow@rennie.com
rennie.com/dannychow

rennie