

34662 St. Matthews Way, Abbotsford

\$939,000



EAST ABBY GEM! Great home in desirable McMillan area and school catchment! This well cared for split entry home features kitchen, dining, living room, 3 bedrooms and 1 bath up with 1 bed, 1 bath, rec room, laundry and storage down. It's clean and move in ready or bring your ideas. Single car garage with parking for RV or extra vehicles. A large deck and peaceful backyard. Walkable to all levels of schools, well situated for commuting, public transit, shopping and recreation! Showings by realtor appointments only [15 mins in home, 15 mins in yard] Don't miss out on this lovely home!

KEY INFORMATION

MLS® R2616255

Residential Detached

Abbotsford East

4 Bedrooms

2 Bathrooms

1,806 SF

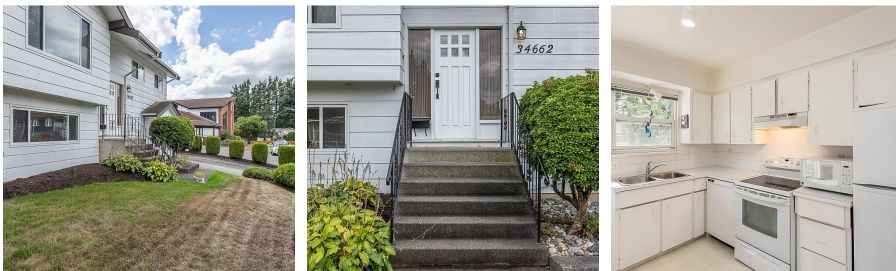
7,765 SF Lot



FEATURES

Year Built: 1977

Listed By: Vybe Realty



rennie