

1105 9188 University Crescent, Burnaby

\$585,000



Welcome to Altaire built by award winning Polygon. This 2 bed/2 bath 857 SF unit features an open concept floorplan with ideal split bedroom layout, oversized windows, and beautiful kitchen with S/S appliances and granite countertops. Large master bedroom with double closets and ensuite + generous sized secondary bedroom. Take in the INCREDIBLE panoramic Mountain, Water and City views from your covered balcony. One underground parking stall + lobby level gym completes this home. Enjoy the amazing area amenities, walking distance to SFU, Highlands Elementary, Nester's Market, Restaurants, Transit and parks. This home wont last long!

KEY INFORMATION

MLS® R2617618

Residential Attached

Simon Fraser University

2 Bedrooms

2 Bathrooms

857 SF

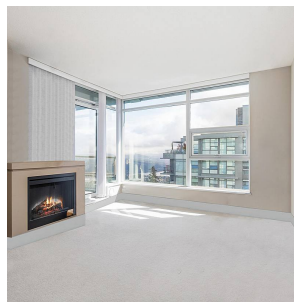
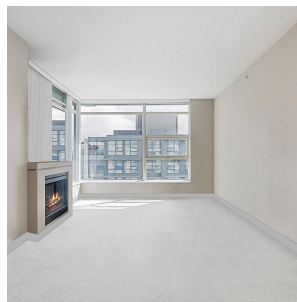
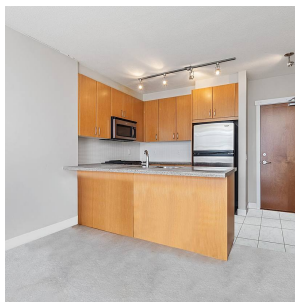
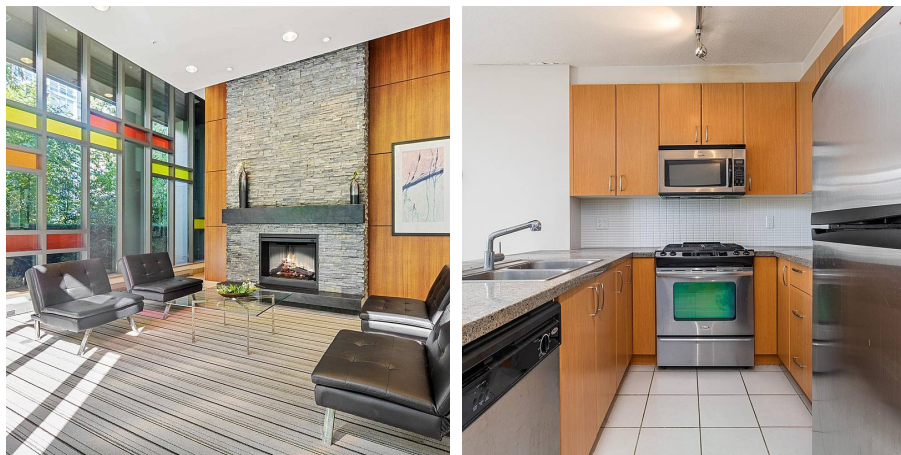
\$318.16 Maintenance Fees

FEATURES

Year Built: 2008

Views: WATER + MOUNTAIN + CITY

Listed By: Royal LePage West Real Estate Services



rennie