

2304 10082 148 Street, Surrey

\$879,800



Spectacular, tastefully updated 3 bedroom and den, 2 bathroom penthouse with 2 parking spots and a BREATHTAKING 180 degree mountain and city view. It's open layout provides beautiful views from the kitchen, dining room and living room through its massive windows framed by 9 foot ceilings . Features include luxury vinyl plank flooring, granite counters, extensive crown moldings, air conditioning, newer appliances, radiant gas fireplace serving the dining and living room, 400 sq. ft of heated patio space accessible by 2 bedrooms and the dining/ living rooms. Amenities include tennis courts, rec centre, outdoor pool, hot tub/ sauna and fitness area. The maintenance fee includes the gas and hot water. It's located just steps from world class shopping, restaurants, movie theatre, and transit.

KEY INFORMATION

MLS® R2618016

Residential Attached

Guildford

3 Bedrooms

2 Bathrooms

1,730 SF

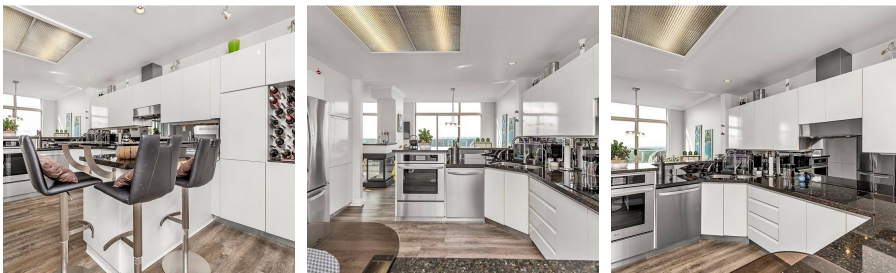
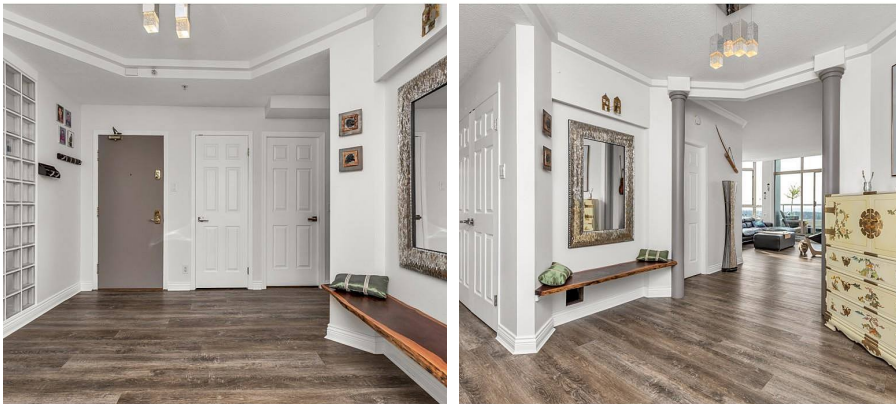
\$982.00 Maintenance Fees

FEATURES

Year Built: 1993

Views: 180 DEGREE MOUNTAIN AND CITY

Listed By: Macdonald Realty Westmar



rennie