

1002 114 W Keith Road, North Vancouver

\$955,000



Victoria Park at your front door! Ashby House is one of Central Lonsdale's most sought-after and treasured locations perched on the high side of West Keith Rd. The panoramic North Shore mountains anchor your backdrop, and the tranquil Park beckons you down for a stroll. A short walk to Whole Foods and the plentiful amenities of Lonsdale. This home is also very close to vital services such as hospital, fire, police. The main living spaces and very generous wraparound balcony enjoy panoramic 180+ degree views, north to the mountains, west to the Island, and south to the city's glowing lights. The home is ready for you and yours: high-quality cherry hardwood will show off your furnishings and match any décor; the kitchen features granite, a newer stove and fridge and a brand new Miele W/D

KEY INFORMATION

MLS® R2618235

Residential Attached

Central Lonsdale

2 Bedrooms

2 Bathrooms

984 SF

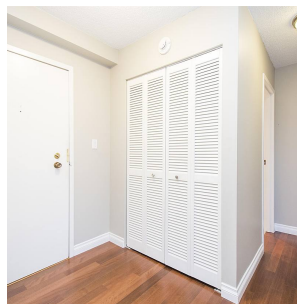
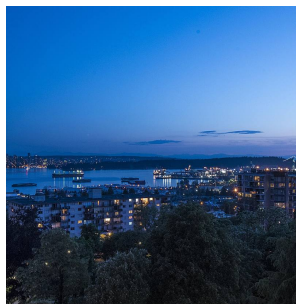
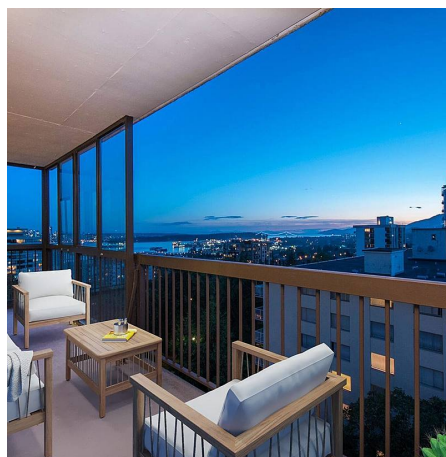
\$598.75 Maintenance Fees

FEATURES

Year Built: 1974

Views: Wrap around; Harbour & Mountain

Listed By: Harcourts



rennie