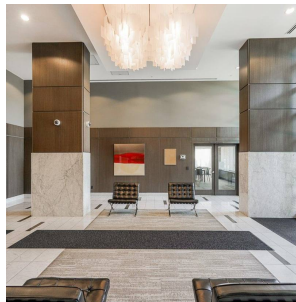
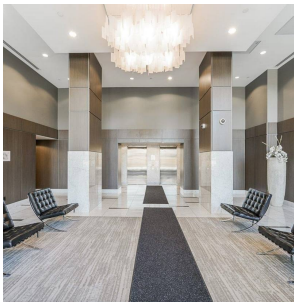
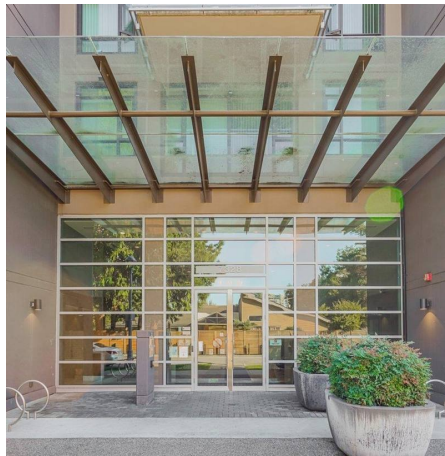


1103 7328 Gollner Avenue, Richmond

\$899,000



Carrera by Polygon. This sought-after unit has an unobstructed breathtaking views to Minoru Park, lake, city and mountains. This 2 bed 2 baths home shows like new, in move-in condition. It features chefs inspired kitchen with quartz countertops, stainless steel Bosch appliances, gas cooktop, microwave over, air conditioned interiors, airy 8'6 ceilings. Very efficient and functional layout. Enjoy the ultra convenient location across from Richmond Centre yet quiet setting away from traffic. Steps to Richmond Centre, Canada Line station, library, senior center, aquatic center, Minoru Park and Track. Fantastic resort-like club house with fitness center, outdoor hot tub, social lounge with wine storage and more. A truly wonderful place to call home!

KEY INFORMATION

MLS® R2617270

Residential Attached

Brighthouse

2 Bedrooms

2 Bathrooms

837 SF

\$460.15 Maintenance Fees

FEATURES

Year Built: 2015

Views: MINORU PARK AND CITY, MOUNTAIN

Listed By: RE/MAX Crest Realty

rennie