

223 7340 Moffatt Road, Richmond

\$529,000



Extra spacious 2 br condo, with close to 1,100 sqft + balcony, in Ashford Place. Enjoy the convenience of being located centrally, close to Richmond centre/Canada Line Brighthouse Skytrain station, while living in a quiet family oriented neighborhood with proximity to schools and Minoru Park. Wrap around West facing balcony spanning entire suite overlooking courtyard. This special unit comes complete with 2 full bathrooms, in-suite laundry/storage, stainless steel appliances, wood burning F/P and 1 secured parking. Suite is perfect for downsizing or a growing family. Recent building upgrades include exterior siding and new elevator. Rental friendly strata (min 30 days), no dogs, 1 cat ok. Strata amenities include shared O/D pool, hot tub, and gym. Call to schedule a viewing!

KEY INFORMATION

MLS® R2619456

Residential Attached

Brighthouse South

2 Bedrooms

2 Bathrooms

1,097 SF

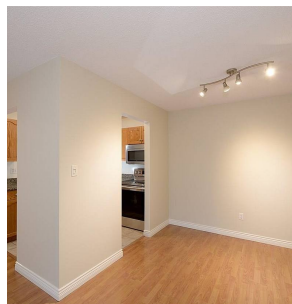
\$563.09 Maintenance Fees

FEATURES

Year Built: 1982

Views: Courtyard

Listed By: Oakwyn Realty Ltd.



rennie