

2602 489 Interurban Way, Vancouver

\$885,000



THIS IS THE ONE YOU'VE BEEN WAITING FOR at Marine Gateway by PCI. SE facing home in the South Tower offering the coveted UNOBSTRUCTED PARNORAMIC VIEWS from the Mountains to Richmond. Your 2 Bdrm 2 Bath home offers plenty of light, an open & functional floorplan, open island kitchen with bar seating, Blomberg appliance package & a LARGE 137 SF balcony perfect to BBQ while admiring your stunning views. Amen incl a rooftop amenity space with BBQ's, party room, indoor & outdoor play area & a business centre. Marine Gateway offers direct access to the Bus Loop & Canada Line where you can get to Downtown & Richmond in minutes. Outside the front door you'll also find T&T, Starbucks, Cineplex movie theater, Fitness World, restaurants, shopping, banks & more! 1 pkg & locker incl.

KEY INFORMATION

MLS® R2619943

Residential Attached

Marpole

2 Bedrooms

2 Bathrooms

795 SF

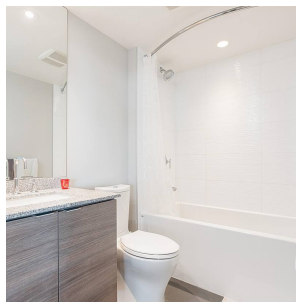
\$431.70 Maintenance Fees

FEATURES

Year Built: 2015

Views: UNOBSTRUCTED PANORAMIC VIEWS

Listed By: rennie & associates realty ltd.



Derek Kai PREC*
604.868.1666
dkai@rennie.com
rennie.com/derekkai

rennie