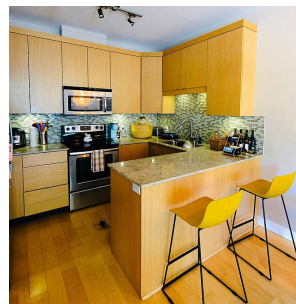
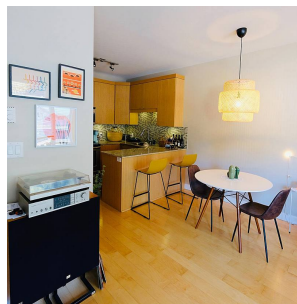
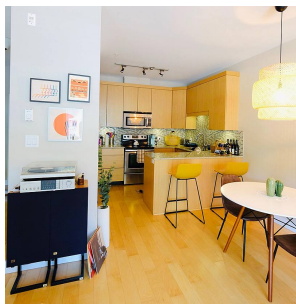


207 1909 Maple Drive, Squamish

\$518,250



The perfect one bedroom apartment is here! Quiet location with spacious living area and balcony. Close to world famous trails and climbing, this apartment checks all the boxes for Squamish living. Small boutique complex, only 10 years old, well maintained and low strata fees!! Home features include hardwood floor, oak cabinets, granite counter tops, stainless steel appliances, in-suite washer and dryer. Covered parking stall with additional parking available. Quiet end of the building with a small grocery store located downstairs and restaurant across the way. Walk out your door and you are faced with the most amazing picture before you, the Stawamus Chief. Life is good at #207 The Edge.

KEY INFORMATION

MLS® R2620199

Residential Attached

Valleycliffe

1 Bedroom

1 Bathroom

684 SF

\$210.06 Maintenance Fees

FEATURES

Year Built: 2011

Views: MOUNTAIN

Listed By: rennie & associates realty ltd.



Belinda Grant

604.906.2099

bgrant@rennie.com

rennie.com/belindagrants

rennie