

1705 212 Davie Street, Vancouver

\$1,290,000



ABSOLUTELY VIEW...WATER VIEW OF FALSE CREEK, MOUNTAIN! EXCELLENTLY FUNCTIONAL&SPACIOUS LAYOUT FEATURING HIGH CEILING & COZY SOLAR ROOM & LARGE GLASS WINDOWS/ W PLENTY OF NATURAL LIGHTS, ENJOY SUMMER SUNSETS FROM THE COMFORT OF YOUR LIVING ROOM.LOCATION.... HEART OF YALETOWN PLUS JUST ACROSS FROM SKYTRAIN STATION! STEPS RESTAURANTS, BARS, PARKS, SEAWALL, MARINA.... ADDITIONAL, 2018 UPDATED WITH LAMINATE FLOORING IN LIVING ROOM SPACE, NEW KITCHEN CABINETS INCLUDED 2 PARKINGS AND 1 STORAGE LOCKER.

KEY INFORMATION

MLS® R2620392

Residential Attached

Yaletown

2 Bedrooms

2 Bathrooms

1,236 SF

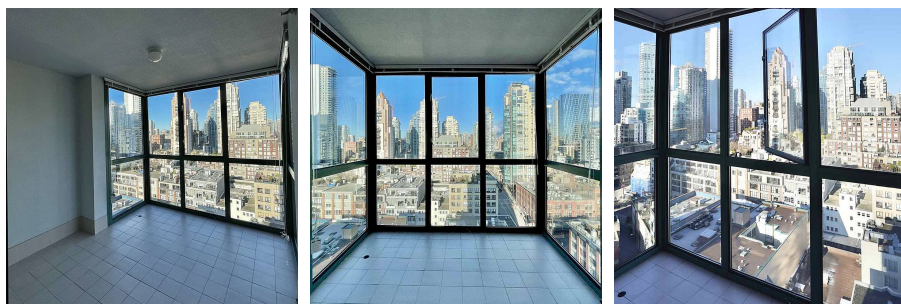
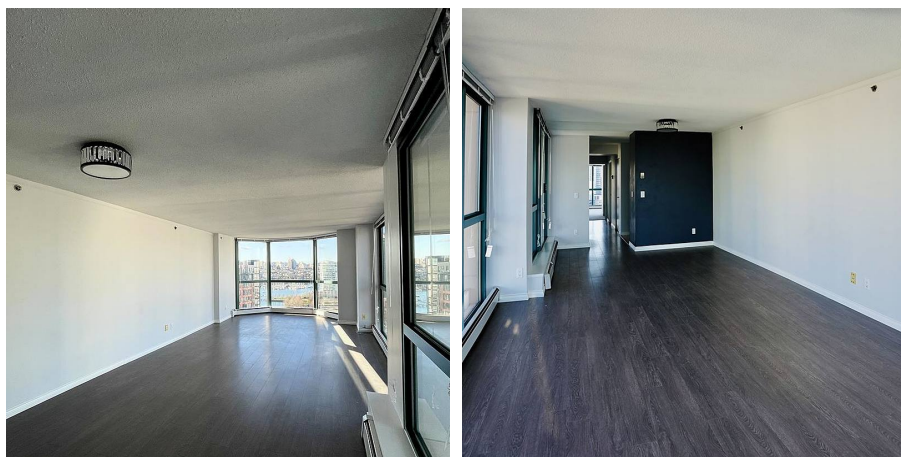
\$557.54 Maintenance Fees

FEATURES

Year Built: 1994

Views: WATER VIEWS OF FALSE CREEK

Listed By: LeHomes Realty Premier



rennie