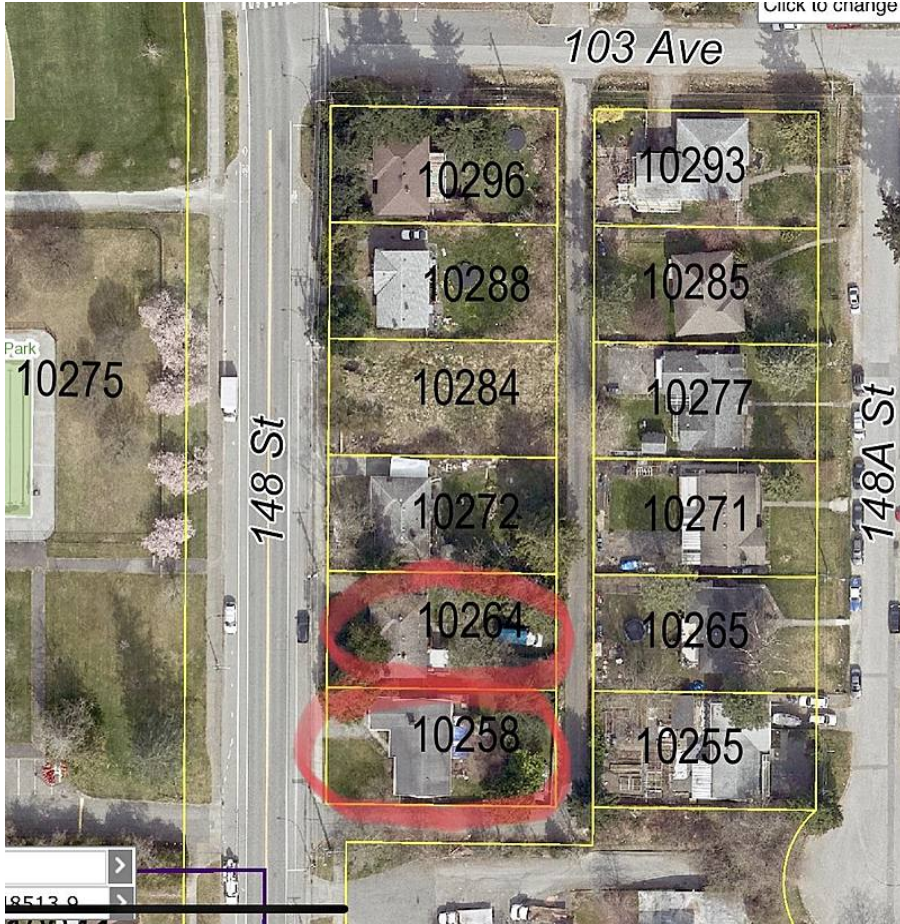


10264 148 Street, Surrey

\$1,650,000



Opportunity, Opportunity, Opportunity!!! Part of the new GUILFORD TOWN CENTRE PLAN. Approved for a 6 storey Apartment Building. Buy now and hold or buy with neighboring properties as part of an assembly. GREAT INVESTMENT OPPORTUNITY! Well Kept, New Furnace, great potential rental income.

KEY INFORMATION

MLS® R2620209
 Residential Detached
 Guildford
 4 Bedrooms
 2 Bathrooms
 1,924 SF
 7,506 SF Lot

FEATURES

Year Built: 1961
 Views: MOUNTAIN VIEWS
 Listed By: Century 21 In Town Realty

