

201 4135 Sardis Street, Burnaby

\$1,088,000



PADDINGTON HOUSE by Otivo Developments. Rare find South facing Corner unit 2 level townhome offers 9' ceilings on the main floor. Open layout. Quality finishing from composite stone countertops, laminate flooring and Stainless steel KitchenAid Architect Series appliances, including a gas cooktop. Walking distance to Patterson Sky Train Station, Crystal Mall & Metrotown. This home is fully rain screen protected with acoustic sound proof insulation between floors. 2 parkings and 1 locker included. School catchment: Chaffey-Burke Elementary & Moscrop Secondary.

KEY INFORMATION

MLS® R2620572

Residential Attached

Central Park

3 Bedrooms

3 Bathrooms

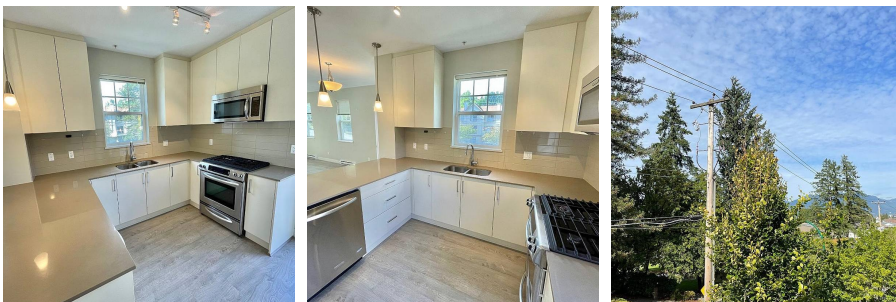
1,295 SF

FEATURES

Year Built: 2015

Views: Partial mountain view

Listed By: rennie & associates realty ltd.



Andy Mah PREC*
604.779.9382
amah@rennie.com
rennie.com/andymah

rennie