

2111 13615 Fraser Highway, Surrey

\$489,800



Welcome to KGH3, King George Hub by PCI conveniently located within steps to the King George SkyTrain station. Sunny South facing orientation features endless panoramic views of trees, city and skyline. This home features an efficient & open layout, Fulgor Milano stainless steel built-in wall oven & microwave, induction cooktop, quartz countertops and top quality laminate flooring throughout. Extensive Amenities such as sky-high Fitness Centre and Yoga Studio, bike room, expansive 40th floor Rooftop Lounge with BBQ and seating areas, spacious Games Room, lounges, children's play area, and Theatre Room. Surrounded by all the shops, services and restaurants you need for everyday living; Central City Shopping Centre, T&T Supermarket, SFU Surrey campus. 1 parking. Call today!

KEY INFORMATION

MLS® R2620659

Residential Attached

Whalley

1 Bedroom

1 Bathroom

517 SF

\$245.18 Maintenance Fees

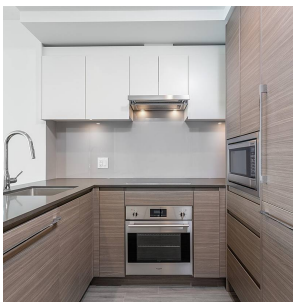
FEATURES

Year Built: 2021

Views: Panoramic Skyline

Listed By: rennie & associates realty ltd.

BALCONY: 124 SQ. FT.



Irene De Guzman

604.720.1996

ideguzman@rennie.com

rennie.com/irenedeguzman

rennie