

210 19945 Brydon Crescent, Langley

\$549,900



Second Floor 2 beds 2 baths, with den, 1-parking stall and 1-storage locker. Atrium is a 4-storey new development featuring a total of 77 units in the City of Langley. These new residences express the heritage of Langley by creating homes that are warm and inviting for its residents while still maintaining modern and sleek West Coast exterior design. These upscale condos are functional and offer a number of amenities, such as entertainment space with a kitchen, an outdoor play area, an Olympian approved gym and much more! Strata Fee as per Disclosure statement \$261.81

KEY INFORMATION

MLS® R2620710

Residential Attached

Langley City

2 Bedrooms

2 Bathrooms

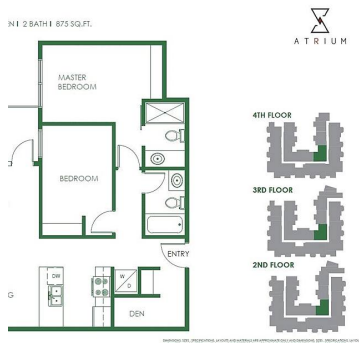
875 SF

\$0.00 Maintenance Fees

FEATURES

Year Built: 2022

Listed By: Coldwell Banker Universe Realty



rennie