

# 3006 583 Beach Crescent, Vancouver

\$1,860,000



Tranquility in the City by the Water. This Japanese inspired contemporary design is a rare gem or create your own inspiration. Bright South-East facing corner unit with a practical open floor plan with floor to ceiling windows to enjoy the spectacular panoramic view of False Creek, City & Mountains. Includes insuite storage space and 1 secure underground parking. Amenities includes indoor pool, gym, sauna, guest suites, party room, squash court, meeting room and theater room. Close to the Seawall, shopping, restaurants and parks.

## KEY INFORMATION

MLS® R2620939

Residential Attached

Yaletown

3 Bedrooms

2 Bathrooms

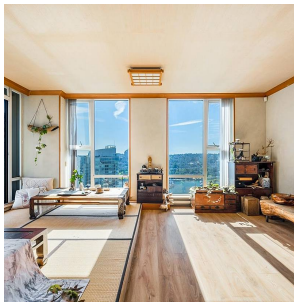
1,056 SF

\$556.40 Maintenance Fees

## FEATURES

Year Built: 2005

Listed By: Royal Pacific Realty (Kingsway) Ltd.



rennie