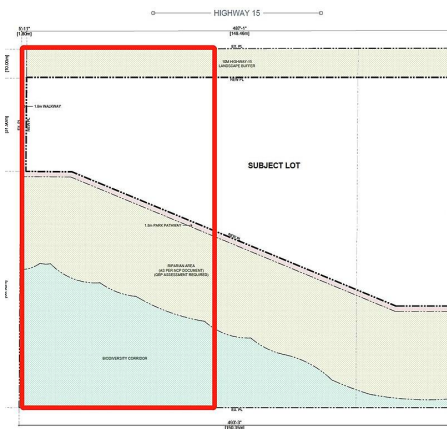
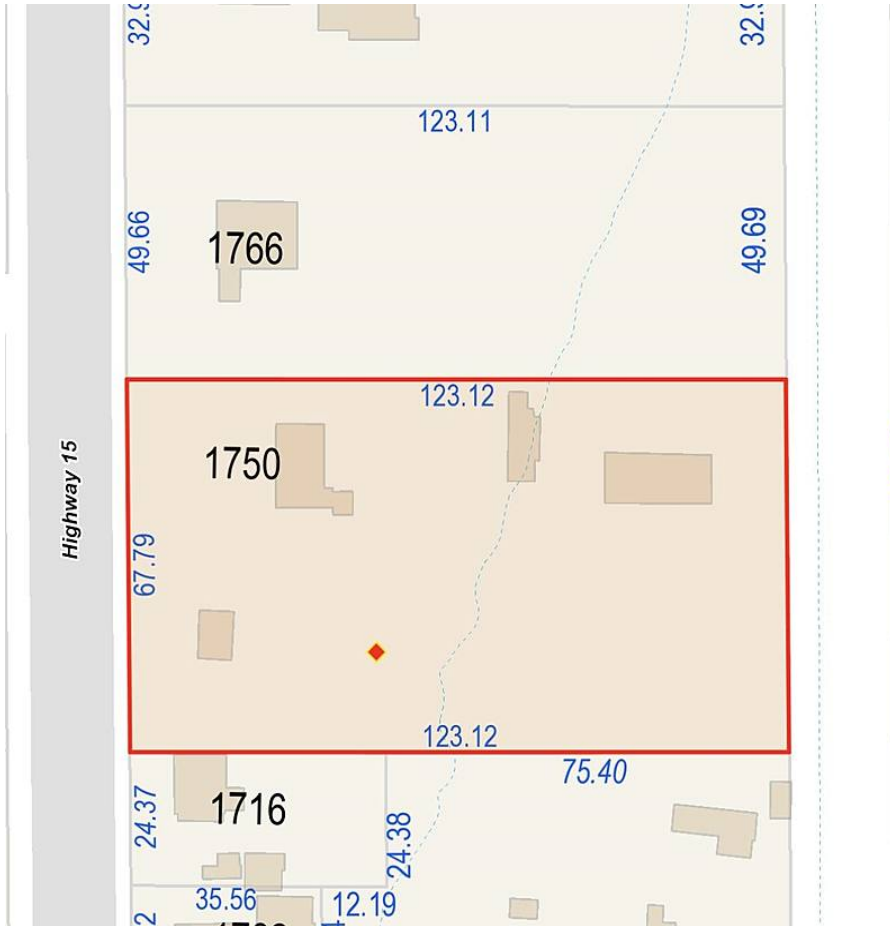


1750 176 Street, Surrey

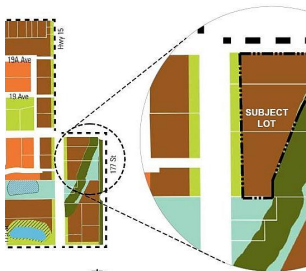
\$4,999,000



Higher density townhouse buildings, and ground-oriented multiple residential. Stacked townhouses with underground parking will be considered in urban village area.

DENSITY RANGE

Base 25 UPA and up to 30 UPA with Zero Carbon Incentive.



Investor Alert! Builder Alert! The property is located in the Darts Hill Neighborhood Concept Plan, which was approved by Council on May 10, 2021. New residential development stated in the Dart Hill Neighborhood Concept plan will provide a variety of housing types to support working professionals, families, and seniors. The intent of the High Density Townhouse designation is to provide higher density townhouse buildings, and ground-oriented multiple residential with a typical height up to 4 storeys for stacked townhouse in select locations and up to 3 storeys for townhouse. Density Range: Base 25 UPA and up to 30 UPA with Zero Carbon Incentive Typical Heights: Up to 4 storey for stacked townhouse in select locations. Up to 3 storey for townhouse.

KEY INFORMATION

MLS® R2622137

Residential Detached

Hazelmere

3 Bedrooms

1 Bathroom

1,561 SF

FEATURES

Year Built: 1958

Listed By: Luxmore Realty

rennie