

3404 13615 Fraser Highway, Surrey

\$747,000



Bright corner unit! Conveniently located next to King George Skytrain Station, KING GEORGE HUB is an upcoming complex built by the award-winning developer PCI. This 2 BEDROOM 2 BATHS with a North-West facing corner windows features high end European Blomberg appliance (refrigerator and dishwasher), Fulgor Milano wall oven and induction cooktop, quartz countertops and laminate flooring through out the unit. Amenities includes: A Gym, Yoga room, Community Lounge, Game room, Theatre room, outdoor BBQ garden and playground. Walking distance to Central City Shopping Center, T&T Market, Walmart, BestBuy, SFU, KPU and more. 1 PARKING. Easy to show, full cooperation!

KEY INFORMATION

MLS® R2621849

Residential Attached

Whalley

2 Bedrooms

2 Bathrooms

807 SF

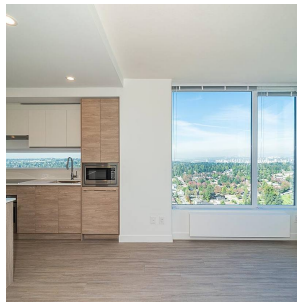
\$386.00 Maintenance Fees

FEATURES

Year Built: 2021

Views: PARK, CITY AND MOUNTAIN

Listed By: Pacific Evergreen Realty Ltd.



rennie