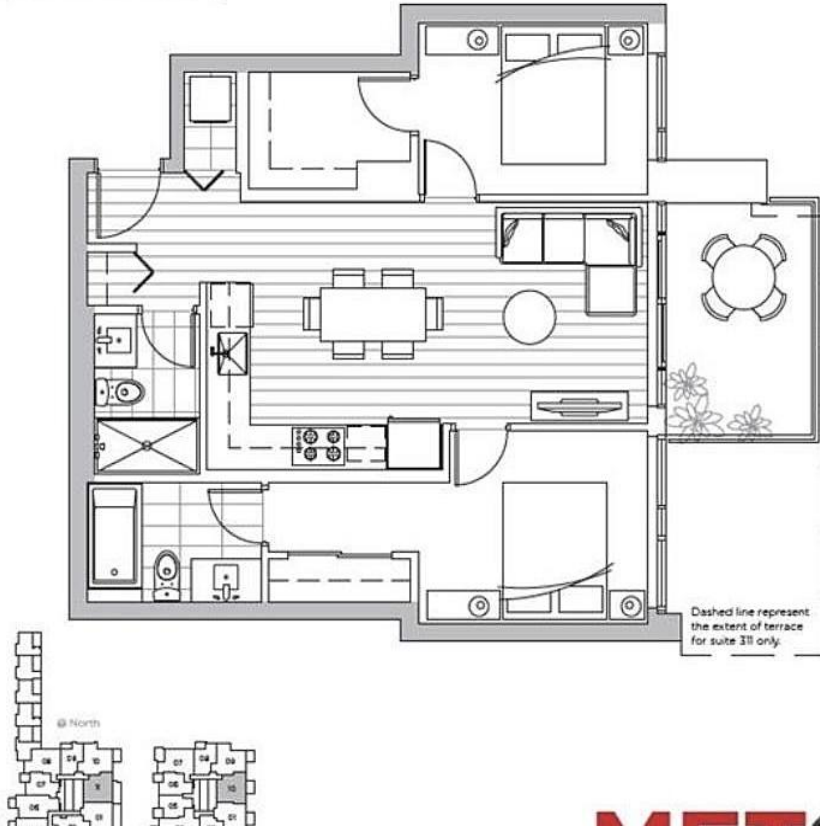


3510 6538 Nelson Avenue, Burnaby

\$969,000

Floors 5 - 40	756 sf	87 sf	843 sf
Floor 3	756 sf	162 sf	918 sf



MET 2 by Concord Pacific in the heart of Metrotown area. Just steps away from Bonsor Community Centre. This TWO bedrooms + TWO baths suite over 900 sqft interior, features Central Air Conditioning, high quality European appliances, quartz countertop and gas cooktop. Huge master bedroom with double basins ensuite and walk-in closet. West facing balcony has panorama view with city, mountains, Richmond area and Ocean. Amazing amenities include concierge service, indoor pool, bowling alley, fitness facilities, and media room. Unit comes with one parking and one storage locker. Great self-living and investment property.

KEY INFORMATION

MLS® R2622260

Residential Attached

Metrotown

2 Bedrooms

2 Bathrooms

756 SF

\$459.89 Maintenance Fees

FEATURES

Year Built: 2017

Views: city, mountain view

Listed By: Luxmore Realty

