

207 7330 Arbutus Street, Pemberton

\$499,000



Why rent when you can own? This gorgeous condo is newly renovated and centrally located in the Pemberton Gateway. This floorplan is the largest 1-bedroom in the building. With a bright living space and an open layout, this unit boasts a private, wrap around balcony with views of Mt. Currie. This condo includes a new kitchen, flooring, lighting, a fresh paint job, a personal storage locker and a secure underground parking space. The building has an elevator which makes this location a breeze to access at all times. The building features several salons, a local massage therapist and the popular Mile One Restaurant & Market. With a 5-minute walk to One Mile Lake and easy access to all the trails, this unit is one of a kind and ready to move in!

KEY INFORMATION

MLS® R2622478

Residential Attached

Pemberton

1 Bedroom

1 Bathroom

604 SF

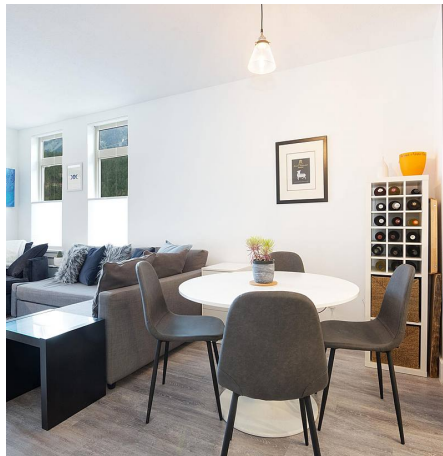
\$400.17 Maintenance Fees

FEATURES

Year Built: 2010

Views: Mountain

Listed By: Whistler Real Estate Company Limited



rennie