

# 1202 889 Pacific Street, Vancouver

\$1,749,000



INTRODUCING THE PACIFIC BY GROSVENOR! Sensational panoramic views of the English Bay, mountains, Yaletown can be enjoyed from every point of this home. This masterfully designed is comprised of 892 sq.ft w/ Spectacular kitchen boasts quartz counters & marble backsplash w/ Snaidero cabinetry & Wolfe, Miele & Sub Zero appliances. Luxury, spa inspired ensuite with Snaidero cabinets, marble walls, floating dual basins. Floor to ceiling windows, AC and large outdoor patio. Amenities include 24/7 concierge, fitness centre, beautiful terrace and entertainment centre. Parking with EV Charger.

## KEY INFORMATION

MLS® R2622908

Residential Attached

Downtown

2 Bedrooms

2 Bathrooms

892 SF

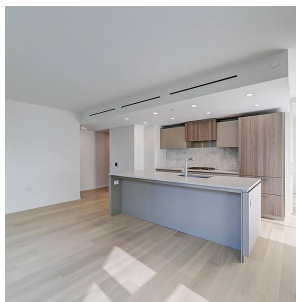
\$539.14 Maintenance Fees

## FEATURES

Year Built: 2021

Views: English Bay & False Creek

Listed By: Royal Pacific Realty Corp.



rennie